

 **BOEING**  
COMPONENT  
MAINTENANCE MANUAL

TO: ALL HOLDERS OF EEC CONTROL PANEL ASSEMBLY M10761 COMPONENT MAINTENANCE  
MANUAL 73-21-86

REVISION NO. 8 DATED NOV 01/04

HIGHLIGHTS

Pages which have been added or revised are outlined below together with the highlights of the revision. Remove and insert the affected pages as listed and enter Revision No. and date on the Record of Revision Sheet.

CHAPTER/SECTION

AND PAGE NO.

DESCRIPTION OF CHANGE

CONTENTS

Edited without technical change.

1

DESCRIPTION & OPERATION

1

REPAIR-GEN

601

1002

Added the S231T290 series switch interchangeability information.

**73-21-86**

HIGHLIGHTS

01.1

Page 1

Nov 01/04

## EEC CONTROL PANEL ASSEMBLY M10761

PART NUMBERS 233T3100-338,-341,-347,-348,  
-373,-374  
233T3242-1,-4,-6,-7,-8,-10,-13,  
-15,-300 THRU -308,  
-1001,-1004,-1006,-1007,  
-1008,-1010,-1013,-1015,  
-1300 THRU -1308

COMPONENT MAINTENANCE MANUAL  
WITH  
ILLUSTRATED PARTS LIST

**73-21-86**

TITLE PAGE

Page 1

Jul 01/03

01.1



REVISION RECORD

- Retain this record in front of manual. On receipt of revision, insert revised pages in the manual, and enter revision number, date inserted and initial.

REVISION NUMBER	REVISION DATE	DATE FILED	BY	REVISION NUMBER	REVISION DATE	DATE FILED	BY

TEMPORARY REVISION AND SERVICE BULLETIN RECORD

BOEING SERVICE BULLETIN	BOEING TEMPORARY REVISION	OTHER DIRECTIVE	DATE OF INCORPORATION INTO MANUAL
233T3242-73-01 233T3242-73-02  233T3242-73-02R1	73-1 (767) 73-2 (757)  73-2 (767) 73-5 (757)	PRR B11749-1 PRR B11481-46 PRR 54530-241S PRR B12901-10S	JAN 01/89 APR 01/90 NOV 01/01 NOV 01/01 NOV 01/01 NOV 01/01 JUL 01/03 JUL 01/03 JUL 01/03

# 73-21-86

TR &amp; SB RECORD

01.1

Page 1

Jul 01/03


**BOEING**  
 COMPONENT  
 MAINTENANCE MANUAL

PAGE	DATE	CODE	PAGE	DATE	CODE
73-21-86			TESTING & TROUBLE SHOOTING		CONT.
			112	BLANK	
TITLE PAGE			REPAIR-GENERAL		
1	JUL 01/03	01.1	*601	NOV 01/04	01.1
2	BLANK		602	BLANK	
REVISION RECORD			ILLUSTRATED PARTS LIST		
1	JAN 01/89	01	1001	JAN 01/89	01
2	BLANK		*1002	NOV 01/04	01.1
TR & SB RECORD			*1003	NOV 01/04	01.101
1	JUL 01/03	01.1	*1004	NOV 01/04	01.101
2	BLANK		*1005	NOV 01/04	01.101
LIST OF EFFECTIVE PAGES			*1006	NOV 01/04	01.101
*1	NOV 01/04	01	*1007	NOV 01/04	01.101
THRU LAST PAGE			*1008	NOV 01/04	01.101
CONTENTS			1009	JUL 01/03	01.1
*1	NOV 01/04	01.1	1010	JUL 01/03	01.1
2	BLANK		1011	JUL 01/03	01.1
INTRODUCTION			1012	JUL 01/03	01.1
1	APR 01/90	01.1	1013	JUL 01/03	01.1
2	BLANK		1014	JUL 01/03	01.1
DESCRIPTION & OPERATION			1015	JUL 01/03	01.1
*1	NOV 01/04	01.1	1016	JUL 01/03	01.1
2	BLANK		1017	JUL 01/03	01.1
TESTING & TROUBLE SHOOTING			1018	JUL 01/03	01.101
101	APR 01/90	01.1	1019	JUL 01/03	01.101
102	NOV 01/01	01.1	1020	JUL 01/03	01.1
103	JUL 01/03	01.1	1021	JUL 01/03	01.1
104	JUL 01/03	01.1	1022	JUL 01/03	01.101
105	JUL 01/03	01.1	1023	JUL 01/03	01.101
106	JUL 01/03	01.1	1024	JUL 01/03	01.101
107	JUL 01/03	01.1	1025	JUL 01/03	01.101
108	JUL 01/03	01.1	1026	JUL 01/03	01.101
109	JUL 01/03	01.1	1027	JUL 01/03	01.101
110	JUL 01/03	01.1	1028	JUL 01/03	01.101
111	JUL 01/03	01.1	1029	JUL 01/03	01.101
			1030	JUL 01/03	01.101
			1031	JUL 01/03	01.1
			1032	JUL 01/03	01.101
			1033	JUL 01/03	01.101
			1034	JUL 01/03	01.101
			1035	JUL 01/03	01.101

\* = REVISED, ADDED OR DELETED

73-21-86

EFFECTIVE PAGES

CONTINUED Page 1

01 Nov 01/04

PAGE	DATE	CODE	PAGE	DATE	CODE
ILLUSTRATED PARTS LIST		CONT.			
1036	JUL 01/03	01.101			
1037	JUL 01/03	01.1			
1038	JUL 01/03	01.1			
1039	JUL 01/03	01.1			
1040	JUL 01/03	01.101			
1041	JUL 01/03	01.101			
1042	JUL 01/03	01.1			
1043	JUL 01/03	01.1			
1044	JUL 01/03	01.1			
1045	JUL 01/03	01.101			
1046	JUL 01/03	01.101			
1047	JUL 01/03	01.1			
1048	JUL 01/03	01.1			
1049	JUL 01/03	01.1			
1050	JUL 01/03	01.1			
1051	JUL 01/03	01.1			
1052	JUL 01/03	01.1			
1053	JUL 01/03	01.1			
1054	JUL 01/03	01.1			
1055	JUL 01/03	01.101			
1056	BLANK				

\* = REVISED, ADDED OR DELETED

**73-21-86**

EFFECTIVE PAGES  
 LAST PAGE Page 2  
 01 Nov 01/04



TABLE OF CONTENTS

<u>Paragraph Title</u>	<u>Page</u>
Description and Operation . . . . .	1
Testing and Trouble Shooting. . . . .	101
Disassembly . . . . .	.*[1]
Cleaning. . . . .	.*[1]
Check . . . . .	.*[1]
Repair. . . . .	601
Assembly. . . . .	.*[1]
Fits and Clearances (not applicable)	
Special Tools . . . . .	.*[2]
Illustrated Parts List. . . . .	1001

\*[1] Use applicable procedures in S0PM (Standard Overhaul Practices Manual) 20-11-05 and standard industry practices.  
 \*[2] Special instructions not required.



INTRODUCTION

The instructions in this manual provide the information necessary to perform maintenance functions including test, fault isolation, and replacement of defective components.

This manual is divided into separate sections:

- |  |                              |
|--|------------------------------|
| 1. Title Page                                      | 4. List of Effective Pages   |
| 2. Record of Revisions                             | 5. Table of Contents         |
| 3. Temporary Revision &<br>Service Bulletin Record | 6. Introduction              |
|  | 7. Procedures & IPL Sections |

Refer to the Table of Contents for the page location of applicable sections.

An explanation of the use of the Illustrated Parts List is provided in the Introduction to that section.

All weights and measurements used in the manual are in English units, unless otherwise stated. When metric equivalents are given they will be in parentheses following the English units.

Design changes, optional parts, configuration differences and Service Bulletin modifications create alternate part numbers. These are identified in the Illustrated Parts List (IPL) by adding an alphabetical character to the basic item number. The resulting item number is called an alpha-variant. Throughout the manual, IPL basic item number references also apply to alpha-variants unless otherwise indicated.

Verification

Testing/Trouble Shooting . . . . . Jan 16, 1990

**73-21-86**

INTRODUCTION

01.1

Page 1

Apr 01/90





## DESCRIPTION AND OPERATION

### 1. Description

- A. The EEC control panel assembly consists primarily of two switches mounted on a baseplate assembly. The baseplate assembly is attached to a connector support by standoffs. Two connectors, and in some cases two relays, are mounted on the connector stand. The entire assembly is interconnected by a wire bundle assembly.
- B. The switches, S1 and S2, are lighted, pushbutton indicators. Each indicator has a five-pole double-throw switch. The switch poles alternate between the contact positions each time the lens cap is pressed and released. The two switch positions are RELAXED and ENGAGED. In the RELAXED mode the lens cap protrudes beyond the lightplate and the switch poles are closed to the normally closed contacts; in the ENGAGED mode the lens cap is flush with the lightplate and the switch poles are closed to the normally open contacts.
- C. For the 233T3242-13, -15, -302, -305, -307, -308, -1013, -1015, -1302, -1305, -1307, -1308, 233T3100-338 (made with 233T3242-15); 233T3100-347 (made with 233T3242-13), and 233T3100-373, -374 only, the assembly contains two relays K1 and K2. The relays are powered via pins on J2 and J3 respectively. When K1 is energized, a continuous path is established between S1 pin 11 and S1 pin 10. When K1 is not energized, S1 pin 11 is an open circuit. When K2 is energized, S2 pin 11 is connected to S2 pin 10; when K2 is not energized, S2 pin 11 is an open circuit.

# 73-21-86

DESCRIPTION &amp; OPERATION

01.1

Page 1

Nov 01/04

TESTING AND TROUBLE SHOOTING1. Test Equipment

## A. Power Supplies:

- (1) Variable 0 to 28v dc
- (2) Variable 0 to 5v ac, 400 Hz

## B. Multimeter -- Simpson 260 or equivalent

## C. Test Connectors -- BACC45FT16-24S and BACC45FT16-24S7 (Boeing breakout box A33003-2 and cables A33003-26 and -28 may be used)

D. Timer -- capable of measuring  $10 \pm 1$  seconds2. Functional Test

- A. Perform the test procedures listed in Fig. 102. BACC45FT16-24S (cable A33003-26) mates with J2 and BACC45FT16-24S7 (cable A33003-28) mates with J3. Component locations are indicated in Fig. 101.

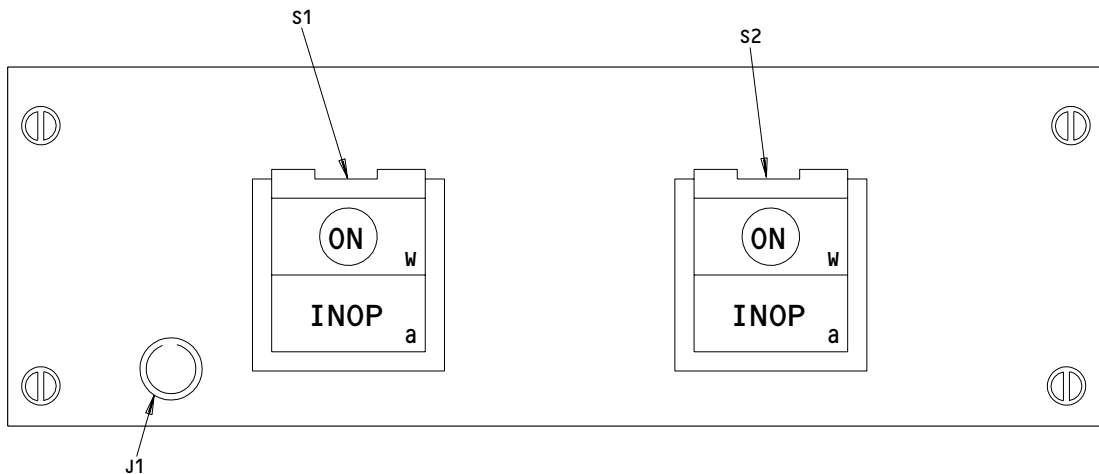
**73-21-86**

TESTING &amp; TROUBLE SHOOTING

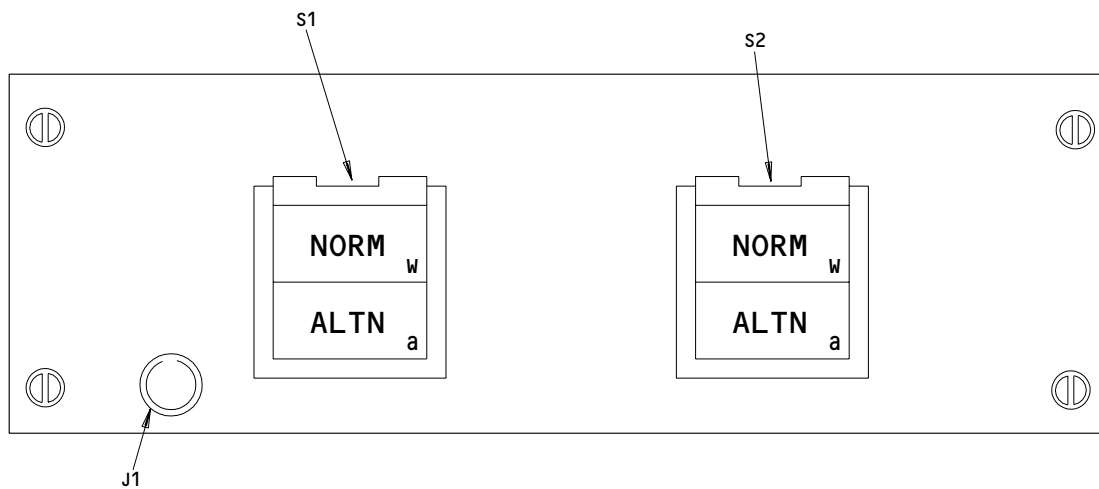
01.1

Page 101

Apr 01/90



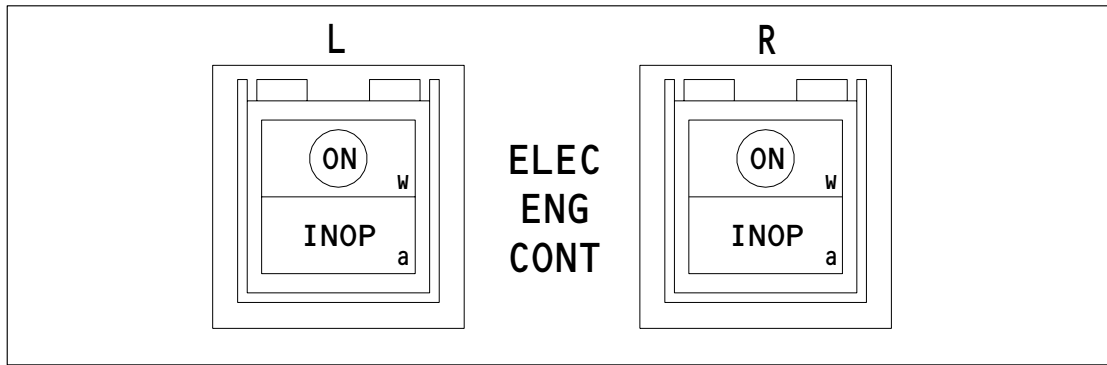
233T3242-1,-4,-6,-7,-13,-15,-1001,-1004,-1006,-1007,-1013,-1015



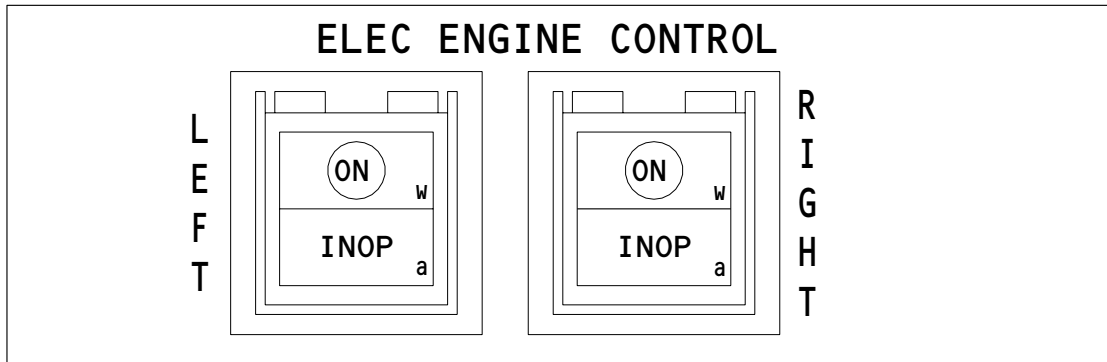
233T3242-8,-10,-1008,-1010

Component Location  
 Figure 101 (Sheet 1)

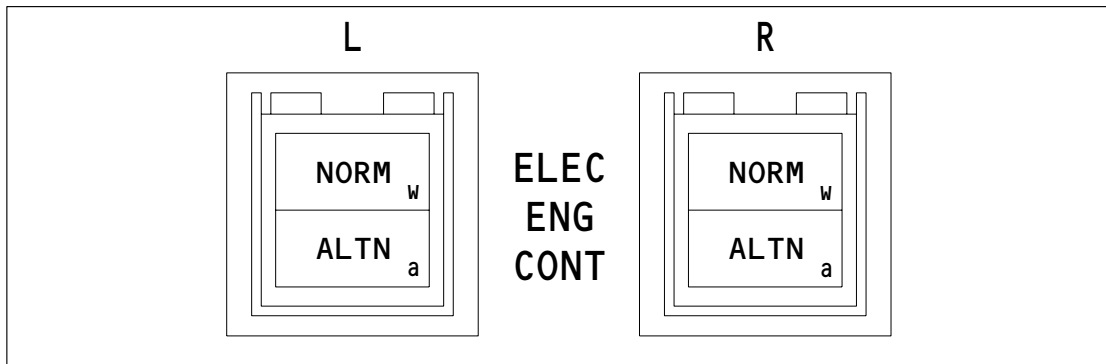
**73-21-86**



233T3100-338 (MADE WITH 233T3242-6) -347 (MADE WITH 233T3242-4)  
 233T3242-300,-301,-1300,-1301,-1306



233T3100-373,-374,-338 (MADE WITH 233T3242-15) -347 (MADE WITH 233T3242-13)  
 233T3242-302,-305,-307,-308,-1302,-1305,-1307,-1308



233T3100-341,-348  
 233T3242-303,-304,-306,-1303,-1304

Component Location  
 Figure 101 (Sheet 2)

**73-21-86**

STEP	TEST PROCEDURE	REQUIRED RESULTS	COMPONENT TESTED
1	Connect J2 to the breakout box.		
2	Set S1 to the RELAXED positioned.		
3	Apply 28.0 ±0.5v dc to J2-3.		
4	Ground J2-4.	INOP lamp on *[1]; ALTN lamp on *[2]	S1
5	Disconnect J2-4.	All lamps off	
6	Ground J2-5.	INOP lamp on *[1]; ALTN lamp on *[2]	S1
7	Disconnect J2-5.	All lamps off	S1
8	Disconnect J2-3.		
9	Jumper together J2-4 and J2-5.		
10	Ground J2-3.		

\*[1] Applies to all assemblies except 233T3242-8, -10, -303, -304, -306, -1008, -1010, -1303, -1304 and 233T3100-341, -348 only

\*[2] 233T3242-8, -10, -303, -304, -306, -1008, -1010, -1303, -1304; 233T3100-341, -348 only

Functional Test  
 Figure 102 (Sheet 1)

# 73-21-86

TESTING & TROUBLE SHOOTING  
 01.1 Page 104  
 Jul 01/03


**BOEING**  
 COMPONENT  
 MAINTENANCE MANUAL

STEP	TEST PROCEDURE	REQUIRED RESULTS	COMPONENT TESTED
11	Momentarily apply 28.0 ±0.5v dc to J2-5.	All lamps remain off	S1
12	Disconnect J2-3. Disconnect J2-4 from J2-5.		
13	Apply 5.0 ±0.5v ac to J2-1.		
14	Apply ac return to J2-2.	All lamps off; For -300 thru -308, -1300 thru -1308; 233T3100-338,-341,-347,-348,-373,-374 only, lightplate legends are on and remain on until 5v ac is removed from J2-1	S1
15	Press and release S1.	ON lamp on *[1]; NORM lamp on *[2]	S1
16	Press and release S1.	All lamps off	S1
17	Measure voltage between the center of J1 and the UUT chassis (-1,-4,-6 thru -8, -10,-13,-15,-1001,-1004,-1006 thru -1008,-1010,-1013,-1015 only).	4.5 to 5.5v ac	J1

\*[1] Applies to all assemblies except 233T3242-8, -10, -303, -304, -306, -1008, -1010, -1303, -1304 and 233T3100-341, -348 only

\*[2] 233T3242-8, -10, -303, -304, -306, -1008, -1010, -1303, -1304; 233T3100-341, -348 only

Functional Test  
 Figure 102 (Sheet 2)

# 73-21-86

TESTING & TROUBLE SHOOTING  
 01.1 Page 105  
 Jul 01/03

STEP	TEST PROCEDURE	REQUIRED RESULTS	COMPONENT TESTED																								
18	Measure the resistance between the listed pin pairs with S1 set as indicated. J2-11 to J2-12 J2-17 to J2-19 J2-17 to J2-18 J2-21 to J2-22 J2-21 to J2-23 J2-5 to J2-15 (-1,-4,-6,-7,-8,-10,-300,-301,-303,-304,-306,-1001,-1004,1006 thru -1008,-1010,-1300,-1301,-1303,-1304,-1306; 233T3100-338 (made with 233T3242-6), -341,-347 (made with 233T3242-4) only) J2-5 to J2-16.	<table border="0"> <tr> <td><u>S1 RELAXED</u></td> <td><u>S1 ENGAGED</u></td> <td></td> </tr> <tr> <td>3 ohms max</td> <td>900k min</td> <td>S1</td> </tr> <tr> <td>3 ohms max</td> <td>900k min</td> <td>S1</td> </tr> <tr> <td>900k min</td> <td>3 ohms max</td> <td>S1</td> </tr> <tr> <td>3 ohms max</td> <td>900k min</td> <td>S1</td> </tr> <tr> <td>900k min</td> <td>3 ohms max</td> <td>S1</td> </tr> <tr> <td>3 ohms max</td> <td>900k min</td> <td>S1</td> </tr> <tr> <td>900k min</td> <td>3 ohms max</td> <td>S1</td> </tr> </table>	<u>S1 RELAXED</u>	<u>S1 ENGAGED</u>		3 ohms max	900k min	S1	3 ohms max	900k min	S1	900k min	3 ohms max	S1	3 ohms max	900k min	S1	900k min	3 ohms max	S1	3 ohms max	900k min	S1	900k min	3 ohms max	S1	
<u>S1 RELAXED</u>	<u>S1 ENGAGED</u>																										
3 ohms max	900k min	S1																									
3 ohms max	900k min	S1																									
900k min	3 ohms max	S1																									
3 ohms max	900k min	S1																									
900k min	3 ohms max	S1																									
3 ohms max	900k min	S1																									
900k min	3 ohms max	S1																									
DO STEPS 19 THRU 22 FOR 233T3242-13, -15, -302, -305, -307, -1013, -1015, -1302, -1305, -1307, -1308; 233T3100-338 (MADE WITH 233T3242-15), -347 (MADE WITH 233T3242-13), -373, -374 ONLY																											
19	Set S1 to the ENGAGED position.																										
19.1	Apply 28.0 ±0.5v dc to J2-16.																										
19.2	Connect ohmmeter to measure the resistance between J2-5 and J2-15.																										
20	Ground J2-8.	3 Ω max in 10 ± 1 seconds	K1																								
21	Set S1 to the RELAXED position.	3 Ω max	K1																								
22	Disconnect J2-8, J2-16 and the ohmmeter.																										

Functional Test  
 Figure 102 (Sheet 3)

# 73-21-86

TESTING & TROUBLE SHOOTING  
 01.1 Page 106  
 Jul 01/03

STEP	TEST PROCEDURE	REQUIRED RESULTS	COMPONENT TESTED
23	Disconnect J2-1 and J2-2.		
24	Disconnect J2 from the break-out box.		
25	Connect J3 to the breakout box.		
26	Set S2 to the RELAXED position.		
27	Apply 28.0 ±0.5v dc to J3-3.		
28	Ground J3-4.	INOP lamp on *[1]; ALTN lamp on *[2]	S2
29	Disconnect J3-4	All lamps off	
30	Ground J3-5.	INOP lamp on *[1]; ALTN lamp on *[2]	S2
31	Disconnect J3-5.	All lamps off	S2
32	Disconnect J3-3.		
33	Jumper together J3-4 and J3-5.		
34	Ground J3-3.		

\*[1] Applies to all assemblies except 233T3242-8, -10, -303, -304, -306, -1008, -1010, -1303, -1304 and 233T3100-341, -348 only

\*[2] 233T3242-8, -10, -303, -304, -306, -1008, -1010, -1303, -1304; 233T3100-341, -348 only

Functional Test  
 Figure 102 (Sheet 4)

# 73-21-86

TESTING & TROUBLE SHOOTING  
 01.1 Page 107  
 Jul 01/03



STEP	TEST PROCEDURE	REQUIRED RESULTS	COMPONENT TESTED
35	Momentarily apply 28.0 ±0.5v dc to J3-5.	All lamps off	
36	Disconnect J3-3. Disconnect J3-4 from J3-5.		
37	Apply 5.0 ±0.5v ac to J3-1.		
38	Apply ac return to J3-2.	All lamps off	S2
39	Press and release S2.	ON lamp on *[1]; NORM lamp on *[2]	S2
40	Press and release S2.	All lamps off	S2
41	Measure the resistance between the listed pin pairs with S2 set as indicated:		
	J3-11 to J3-12	<u>S2 RELAXED</u> 3 ohms max <u>S2 ENGAGED</u> 900k min	S2
	J3-17 to J3-19	3 ohms max      900k min	S2
	J3-17 to J3-18	900k min      3 ohms max	S2
	J3-21 to J3-22	3 ohms max      900k min	S2
	J3-21 to J3-23	900k min      3 ohms max	S2
	J3-5 to J3-15	3 ohms max      900k min	S2
	(-1,-4,-6,-7,-8,-10,-300,-301,-303,-304,-306,-1001,-1004,-1006 thru -1008,-1010,-1300,-1301,-1303,-1304,-1306; 233T3100-338 (made with 233T3242-6), -341,-347 (made with 233T3242-4) only)		
	J3-5 to J3-16	900k min      3 ohms max	S2

\*[1] Applies to all assemblies except 233T3242-8, -10, -303, -304, -306, -1008, -1010, -1303, -1304 and 233T3100-341, -348 only

\*[2] 233T3242-8, -10, -303, -304, -306, -1008, -1010, -1303, -1304; 233T3100-341, -348 only

Functional Test  
 Figure 102 (Sheet 5)

# 73-21-86

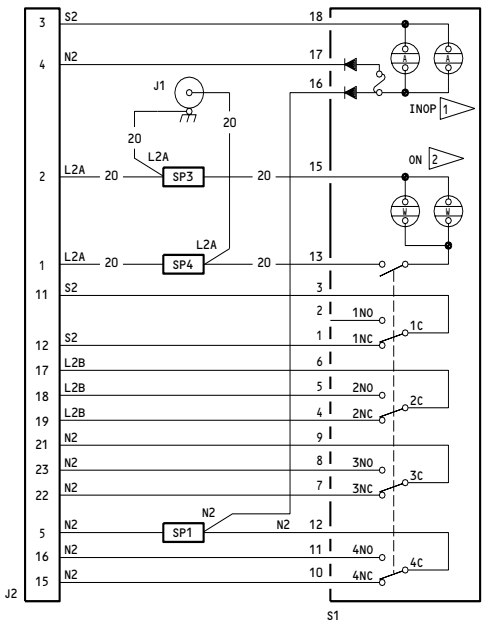
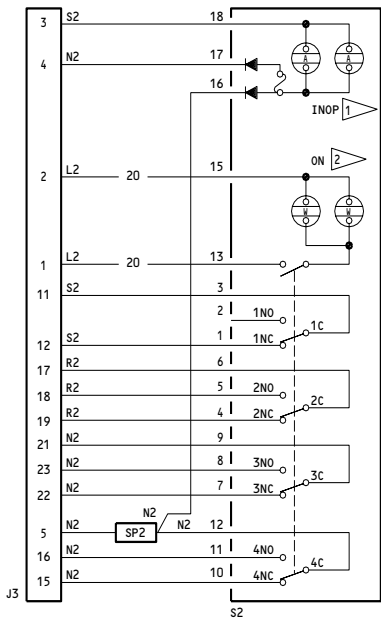
TESTING & TROUBLE SHOOTING  
 01.1 Page 108  
 Jul 01/03

STEP	TEST PROCEDURE	REQUIRED RESULTS	COMPONENT TESTED
DO STEPS 42 THRU 45 FOR 233T3242-13, -15, -302, -305, -307, -1013, -1015, -1302, -1305, -1307, -1308; 233T3100-338 (MADE WITH 233T3242-15), -347 (MADE WITH 233T3242-13), -373, -374 ONLY			
42	Set S2 to the ENGAGED position.		
42.1	Apply 28.0 ±0.5v dc to J3-16.		
42.2	Connect ohmmeter to measure the resistance between J3-5 and J3-15.		
43	Ground J3-8.	3 Ω max in 10 ± 1 seconds	K2
44	Set S2 to the RELAXED position.	3 Ω max	K2
45	Disconnect J3-8, J3-16 and the ohmmeter.		
46	Disconnect J3-1 and J3-2.		
47	Disconnect J3 from the break-out box.		
	End of Test		

Functional Test  
 Figure 102 (Sheet 6)

# 73-21-86

TESTING & TROUBLE SHOOTING  
 01.1 Page 109  
 Jul 01/03



**NOTES:** ALL WIRES ARE BMS 13-16,  
 TYPE 1, CLASS 1, SIZE IS  
 AWG NO. 22 EXCEPT AS NOTED.

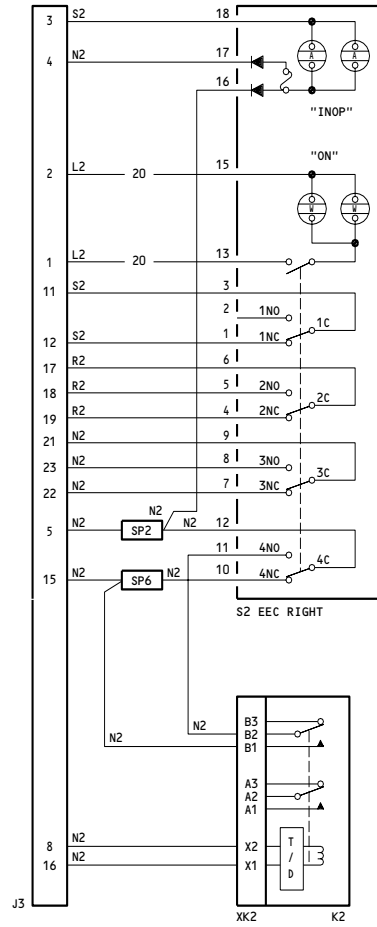
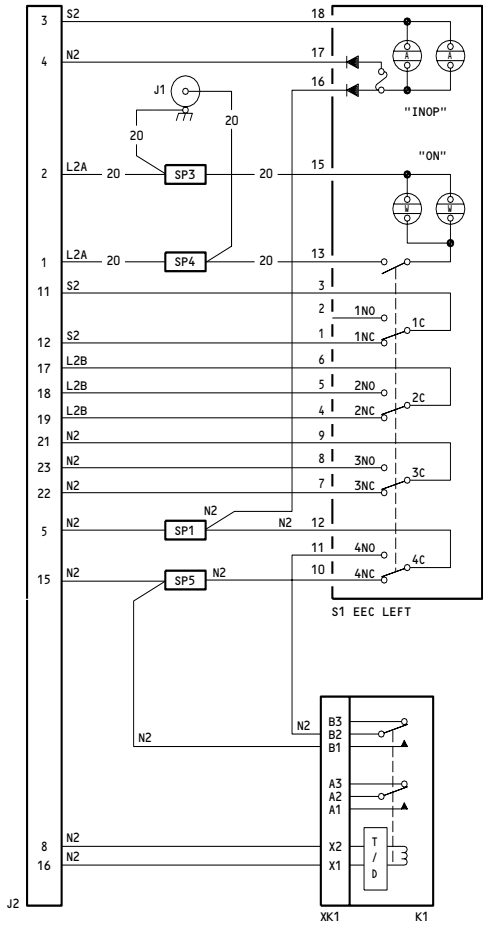
**1** ALTN FOR ASSEMBLIES  
 233T3100-341,-348  
 233T3242-8,-10,-303,-304,-1008,-1010,-1303,-1304

**2** NORM FOR ASSEMBLIES  
 233T3100-341,-348  
 233T3242-8,-10,-303,-304,-1008,-1010,-1303,-1304

233T3100-338 (MADE WITH 233T3242-6),-341,-347 (MADE WITH 233T3242-4),-348  
 233T3242-1,-4,-6,-7,-8,-10,-300,-301,-303,-304,-306,-1001,-1004,  
 -1006,-1007,-1008,-1010,-1300,-1301,-1303,-1304,-1306

Schematic Diagram  
 Figure 103

NOTE: ALL WIRES ARE BMS 13-16,  
TYPE 1, CLASS 1, SIZE IS  
AWG NO. 22 EXCEPT AS NOTED.



233T3100-338 (MADE WITH 233T3242-15),-347 (MADE WITH 233T3242-13),-373,-374  
233T3242-13,-15,-302,-305,-307,-308,-1013,-1015,-1302,-1305,-1307,-1308

Schematic Diagram  
Figure 104

REPAIR

1. All repairs can be accomplished using standard industry practices and procedures contained in SOPM 20-11-05, except as follows:

## A. Replacement of Wires

- (1) Separate all S1 wiring from S2 wiring by a minimum of 0.25 inch.
- (2) Use colored plastic tying material to separate wires according to functional category. Use the color indicated in the list below. The functional separation category for each wire is shown on the schematic diagram.

<u>Functional Separation Category</u>	<u>Wire Bundle Tying Material Color</u>
L2,L2A, or L2B	Red
R2	Green
S2	Blue
N2	White

- (3) Wire bundles may be separated by 63-9273-2 spacers or Varglass nonfray type H0 or HP sleeving may be used.

## B. Switch Replacement

- (1) When replacing S1 or S2 (Fig. 1, item 10), tighten mounting screws to a torque of 5 to 20 inch-ounces.
- (2) When you replace the lighted pushbutton switch (Korry -1000/-4000 series switches) installed on the 233T3242-1XXX series modules, make sure that you use the switch with the letter "D" imprinted on the master module of the switch. The Korry part number of the master module with the configuration "D" marked is 13206-001.

## C. Assembly

- (1) When attaching the standoffs (Fig. 1, item 55) to the baseplate assembly (Fig. 1, item 20), apply Loctite sealant to the threads of the screws (Fig. 1, item 25).

**73-21-86**

REPAIR-GENERAL

01.1

Page 601

Nov 01/04

ILLUSTRATED PARTS LIST

1. This section lists and illustrates replaceable or repairable component parts. The Illustrated Parts Catalog contains a complete explanation of the Boeing part numbering system.

2. Indentures show parts relationships as follows:

Assembly

Detail Parts for Assembly

Subassembly

Attaching Parts for Subassembly

Detail Parts for Subassembly

Detail Installation Parts (Included only if installation parts may be returned to shop as part of assembly)

3. One use code letter (A, B, C, etc.) is assigned in the EFF CODE column for each variation of top assembly. All listed parts are used on all top assemblies except when limitations are shown by use code letter opposite individual part entries.

4. Letter suffixes (alpha-variants) are added to item numbers for optional parts, Service Bulletin modification parts, configuration differences (Except left- and right-hand parts), product improvement parts, and parts added between two sequential item numbers. The alpha-variant is not shown on illustrations when appearance and location of all variants of the part is the same.

5. Service Bulletin modifications are shown by the notations PRE SB XXXX and POST SB XXXX.

A. When a new top assembly part number is assigned by Service Bulletin, the notations appear at the top assembly level only. The configuration differences at detail part level are then shown by use code letter.

B. When the top assembly part number is not changed by the Service Bulletin, the notations appear at the detail part level.

6. Parts Interchangeability

Optional  
(OPT)

The parts are optional to and interchangeable with other parts having the same item number.

Supersedes, Superseded By  
(SUPSDS, SUPSD BY)

The part supersedes and is not interchangeable with the original part.

Replaces, Replaced By  
(REPLS, REPLD BY)

The part replaces and is interchangeable with, or is an alternate to, the original part.

**73-21-86**

ILLUSTRATED PARTS LIST

01 Page 1001

Jan 01/89

7. The following table may be used to find the interchangeability information for the S231T290 series flight deck pushbutton switches. The corresponding vendor part number is shown in parentheses along with the cage code. The last two digits denoted by 'XX' should match between the old part and interchangeable part numbers. The old part number may be used as a replacement unless noted differently:

<u>Old Part Number</u>	<u>Interchangeable Part Number</u>
S231T290-10XX *[1] (433-673-1001-10XX (V81590))	S231T290-42XX (4336731004-42XX (V81590))
S231T290-11XX *[1] (433-673-1001-11XX (V81590))	S231T290-43XX (4336731004-43XX (V81590))
S231T290-20XX (851-30768-20XX (V96182))	S231T290-42XX (4336731004-42XX (V81590))
S231T290-30XX (851-30768-30XX (V96182))	S231T290-42XX (4336731004-42XX (V81590))
S231T290-31XX (851-30768-31XX (V96182))	S231T290-43XX (4336731004-43XX (V81590))
S231T290-40XX *[1] (433-673-1004-40XX (V81590))	S231T290-42XX (4336731004-42XX (V81590))
S231T290-41XX *[1] (433-673-1004-41XX (V81590))	S231T290-43XX (4336731004-43XX (V81590))

\*[1] The old part number may be used as a replacement where the old part number contains configuration "D" master module. See repair section for additional information.

# 73-21-86


**BOEING**  
 COMPONENT  
 MAINTENANCE MANUAL
VENDORS

- 05063 AVNET INC HAMILTON-AVNET ELECTRONICS DIV  
MELVILLE, NEW YORK 11747-3503  
LOCATION UNKNOWN TO LOCAL POSTAL AUTHORITIES
- 05574 VIKING ELECTRONICS INC.  
5455 ENDEAVOUR CT  
MOORPARK, CALIFORNIA 93021  
FORMERLY VIKING IND DATACON DIV; VIKING SPECIAL PROD V53156;  
FORMERLY VIKING CONN SUB OF CRITON CORP; ARIZONA INTEGRATED  
ELEC VOP9C6; FORMERLY IN CHATSWORTH, CA
- 05617 IDD AEROSPACE CORP  
18225 NORTHEAST 76TH STREET PO BOX 97056  
REDMOND, WASHINGTON 98073-9756  
FORMERLY FARWEST ELEC INC; FORMERLY IN BELLEVUE, WA;  
FORMERLY BELL IND FARWEST MFG DIV; FORMERLY BELL IND  
ILLUMINATED DISPLAYS DIV
- 07261 AVNET INCORPORATED  
10916 WASHINGTON BLVD  
CULVER CITY, CALIFORNIA 90230
- 09922 FRAMATOME CONNECTORS FRANCE  
50 GRUMBACHER ROAD  
YORK, PENNSYLVANIA 17402  
FORMERLY BURNDY ENGRG CO V02198; FORMERLY BURNDY CORP  
FORMERLY NORWALK, CONNECTICUT
- 12324 DUPREE INC STAKE FASTENER CO  
14395 RAMONA PO BOX 1797  
CHINO, CALIFORNIA 91708  
FORMERLY DUPREE MFG CO IN SOUTH EL MONTE, CALIFORNIA  
FORMERLY STAKE FASTENER CO DIV OF DUPREE INC
- 15653 FAIRCHILD FASTENERS KAYNAR PRODUCTS DIV  
800 S STATE COLLEGE BLVD  
FULLERTON, CALIFORNIA 92831-3001  
FORMERLY VK6405 MICRODOT AEROSP LTD; FORMERLY KAYNAR TECH  
KAYNAR DIV
- 20441 POWELL ELECTRONICS INC  
SOUTH ISLAND ROAD PO BOX 8765  
PHILADELPHIA, PENNSYLVANIA 19101-5065
- 28523 POWELL ELECTRONICS INC  
1201 NW 65TH PLACE  
FT LAUDERDALE, FLORIDA 33309-1942  
FORMERLY IN MIAMI SPRINGS, FLORIDA

**73-21-86**
 ILLUSTRATED PARTS LIST  
 01.101 Page 1003  
 Nov 01/04



VENDORS

35344 LEACH CORP RELAY DIV SEE LEACH CORP CONTROL PROD DIV V58657

51896 SPECTRA LUX CORP  
11825 120TH AVENUE NORTHEAST  
KIRKLAND, WASHINGTON 98034  
FORMERLY IN BELLEVUE, WASHINGTON

54165 TENNANT C SONS & CO ELECTRONICS DIV  
1051 BLAKE STREET PO BOX 13328  
EDWARDSVILLE, KANSAS 66113  
FORMERLY TENNANT C ELECTRONICS DIV  
TENNANT C ELECTRONICS DIV SEE TENNANT C SONS AND CO

58982 PRECISION CONNECTOR DESIGNS INC  
CENTENNIAL PARK 2 TECHNOLOGY DRIVE  
PEABODY, MASSACHUSETTS 01960  
FORMERLY IN WINCHESTER, MASSACHUSETTS

60119 MONADNOCK CO THE  
18301 ARENTH AVENUE PO BOX 1222  
CITY OF INDUSTRY, CALIFORNIA 91749  
FORMERLY UNITED CARR FASTENER CORP VB0051 VB0056 VB0076  
FORMERLY TRW ELECTRONIC COMPONENTS CINCH-MONADNOCK DIV  
FORMERLY CINCH-MONADNOCK DIV OF TRW INC V76530

72794 DZUS FASTENER COMPANY, INCORPORATED  
425 UNION BOULEVARD  
WEST ISLIP, NEW YORK 11795-3123  
FORMERLY IN BABYLON, NEW YORK

72962 HARVARD INDUSTRIES INC  
3 WERNER WAY SUITE 210  
LEBANON, NEW JERSEY 08833  
FORMERLY AMERACE CORP ESNA DIV  
FORMERLY ELASTIC STOP NUT IN UNION, NJ

77820 ALLIED AMPHENOL PRODUCTS BENDIX CONNECTOR OPERATIONS  
40-60 DELAWARE ST  
SIDNEY, NEW YORK 13838  
FORMERLY BENDIX CORP THE SCINTILLA DIV AND ELECT COMP DIV  
FORMERLY BENDIX CORP ELECT CMPNT DIV SANTA ANA PLANT V12143

81590 KORRY ELECTRONIC INC SUB OF CRITON CORP  
901 DEXTER AVENUE NORTH  
SEATTLE, WASHINGTON 98109-3515  
FORMERLY KORRY, BORIS VB0021 AND KORRY MFG CO

**73-21-86**

ILLUSTRATED PARTS LIST  
01.101 Page 1004  
Nov 01/04

 **BOEING**  
COMPONENT  
MAINTENANCE MANUAL

VENDORS

- 95266 O E C O CORP  
4607 SE INTERNATIONAL WAY  
MILWAUKIE, OREGON 97222  
FORMERLY OSBOURNE ELECTRIC IN PORTLAND, OREGON
- 96182 EATON CORP AEROSPACE AND COMMERCIAL CONTROLS DIV MSC PROD  
1640 MONROVIA  
COSTA MESA, CALIFORNIA 92627-4405  
FORMERLY MASTER SPECIALITIES CO IN GARDENA, CALIFORNIA

**73-21-86**

ILLUSTRATED PARTS LIST  
01.101 Page 1005  
Nov 01/04

REFERENCE DESIGNATOR INDEX (SEE SCHEMATIC DIAGRAM)		
REFERENCE DESIGNATOR	PART NUMBER	FIG-ITEM
J1	800-000121-1	1-15A
J1	800-000121-1	3-25A
J1	800-000121-1	4-25A
J1	800000121-1	1-15
J1	800000121-1	2-10
J1	800000121-1	3-25
J1	800000121-1	4-25
J2	BACC45FN16-24P	1-70
J2	BACC45FN16-24P	2-65
J2	BACC45FN16-24P	3-80
J2	BACC45FN16-24P	4-80
J3	BACC45FN16-24P7	1-75
J3	BACC45FN16-24P7	3-85
J3	BP06P16-24P7	2-70
J3	BP06P16-24P7	4-85
K1	TDH8119-1002	2-75
K1	TDH8119-1002	4-90
K2	TDH8119-1002	2-75
K2	TDH8119-1002	4-90
S1	BCREFA0505	1-10C
S1	BCREFA0505	10D
S1	BCREFA0505	10E
S1	BCREFA0505	10S
S1	BCREFA0505	10T
S1	BCREFA0505	10U
S1	BCREFA0505	2-5
S1	BCREFA0505	5B
S1	BCREFA0505	5D
S1	BCREFA0505	5F
S1	BCREFA0505	3-20A
S1	BCREFA0505	20B
S1	BCREFA0505	20M
S1	BCREFA0505	20N
S1	BCREFA0505	4-20
S1	BCREFA0505	20B
S1	BCREFA0505	20D
S1	BCREFA0505	20F
S1	BCREFA0538	1-10J
S1	BCREFA0538	10K
S1	BCREFA0538	10W
S1	BCREFA0538	1-10X
S1	BCREFA0538	3-20D
S1	BCREFA0538	20E
S1	BCREFA0538	20Q
S1	BCREFA0538	20R

73-21-86

 ILLUSTRATED PARTS LIST  
 01.101 Page 1006  
 Nov 01/04


**BOEING**  
 COMPONENT  
 MAINTENANCE MANUAL

REFERENCE DESIGNATOR INDEX (SEE SCHEMATIC DIAGRAM)		
REFERENCE DESIGNATOR	PART NUMBER	FIG-ITEM
S1	BCREF7606	1-10B
S1	BCREF7606	10R
S1	BCREF7606	3-20
S1	BCREF7606	20L
S1	BCREF7607	1-10
S1	S231T290-5086	10L
S1	S231T290-5086	10Y
S1	S231T290-5086	3-20F
S1	S231T290-5086	20S
S1	4336731004-4016	20H
S1	4336731004-4016	20P
S1	4336731004-4216	1-10Q
S1	4336731004-4216	10V
S1	4336731004-4216	4-20C
S1	4336731004-4286	3-20K
S1	851-30768-2017	1-10A
S1	851-30768-3016	10G
S1	851-35100-5016	10N
S1	851-35100-5016	2-5C
S1	851-35100-5016	5E
S1	851-35100-5016	4-20A
S1	851-35100-5016	20E
S1	851-35100-5086	1-10P
S1	851-35100-5086	10Z
S1	851-35100-5086	3-20G
S1	851-35100-5086	20T
S2	BCREFA0505	1-10C
S2	BCREFA0505	10D
S2	BCREFA0505	10E
S2	BCREFA0505	10S
S2	BCREFA0505	10T
S2	BCREFA0505	10U
S2	BCREFA0505	2-5
S2	BCREFA0505	5B
S2	BCREFA0505	5D
S2	BCREFA0505	2-5F
S2	BCREFA0505	3-20A
S2	BCREFA0505	20B
S2	BCREFA0505	20M
S2	BCREFA0505	20N
S2	BCREFA0505	4-20
S2	BCREFA0505	20B
S2	BCREFA0505	20D
S2	BCREFA0505	20F
S2	BCREFA0538	1-10J

73-21-86

 ILLUSTRATED PARTS LIST  
 01.101 Page 1007  
 Nov 01/04

REFERENCE DESIGNATOR INDEX (SEE SCHEMATIC DIAGRAM)		
REFERENCE DESIGNATOR	PART NUMBER	FIG-ITEM
S2	BCREFA0538	10K
S2	BCREFA0538	10W
S2	BCREFA0538	10X
S2	BCREFA0538	3-20D
S2	BCREFA0538	20E
S2	BCREFA0538	20Q
S2	BCREFA0538	20R
S2	BCREF7606	1-10B
S2	BCREF7606	10R
S2	BCREF7606	3-20
S2	BCREF7606	20L
S2	BCREF7607	1-10
S2	S231T290-5086	10L
S2	S231T290-5086	10Y
S2	S231T290-5086	3-20F
S2	S231T290-5086	20S
S2	4336731004-4016	20H
S2	4336731004-4016	20P
S2	4336731004-4216	1-10Q
S2	4336731004-4216	10V
S2	4336731004-4216	4-20C
S2	4336731004-4286	3-20K
S2	851-30768-2017	1-10A
S2	851-30768-3016	10G
S2	851-35100-5016	10N
S2	851-35100-5016	2-5C
S2	851-35100-5016	5E
S2	851-35100-5016	4-20A
S2	851-35100-5016	20E
S2	851-35100-5086	1-10P
S2	851-35100-5086	1-10Z
S2	851-35100-5086	3-20G
S2	851-35100-5086	20T
XK1	000300-1646	2-80
XK1	000300-1646	4-95
XK2	000300-1646	2-80
XK2	000300-1646	4-95

73-21-86

 ILLUSTRATED PARTS LIST  
 01.101 Page 1008  
 Nov 01/04


**BOEING**  
 COMPONENT  
 MAINTENANCE MANUAL

PART NUMBER	AIRLINE PART NO.	FIG.	ITEM	TTL REQ
BACC45FN16-24P		1	70	1
		2	65	1
		3	80	1
		4	80	1
BACC45FN16-24P7		1	75	1
		3	85	1
BACC45N16-24P7		2	70	1
		4	85	1
BACN10NW1		1	65	6
		2	60	6
		3	75	6
		4	75	6
BACP10U0187N		1	40	1
		2	35	1
		3	50	1
		4	50	1
BACS12CK04U5		1	60A	6
		3	70A	6
BACS12CK06U5		1	45A	3
		3	55A	3
BACS12HN04-5		4	70A	6
		4	70B	3
BACS12HN06-5		4	55A	3
		4	55B	3
BACS16W10A		2	80	2
		4	95	2
BACS21DX1B		1	30	4
		2	25	4
		3	40	4
		4	40	4
BACW10EC06C		1	50A	3
		3	60A	3
BACW10EC06CD		4	60A	3
		4	60B	3
BACW10EC06S		4	60C	3

# 73-21-86

ILLUSTRATED PARTS LIST

01.1

Page 1009

Jul 01/03

PART NUMBER	AIRLINE PART NO.	FIG.	ITEM	TTL REQ	
BCREFA0505		1	10C	2	
		1	10D	2	
		1	10E	2	
		1	10S	2	
		1	10T	2	
		1	10U	2	
		2	5	2	
		2	7		
		2	5B	2	
		2	5D	2	
		2	5F	2	
		3	20A	2	
		3	20B	2	
		3	20M	2	
		3	20N	2	
		4	17		
		4	20	2	
		4	20B	2	
		4	20D	2	
		4	20F	2	
		1	17		
		1	10J	2	
		1	10K	2	
		1	10W	2	
		1	10X	2	
		3	22		
		3	20D	2	
		3	20E	2	
		3	20Q	2	
		3	20R	2	
	BCREF19462		3	20J	
	BCREF7606		1	10B	2
			1	10R	2
		3	20	2	
		3	20L	2	
BCREF7607		1	10	2	
BP06P16-24P7		2	70	1	
		4	85	1	
FH6C5CPL12BN		3	35B	3	
		4	35A	3	
FH6C5PL12BN		3	35A		
K19798-04		1	65	6	
		2	60	6	
		3	75	6	
		4	75	6	

73-21-86

 ILLUSTRATED PARTS LIST  
 01.1 Page 1010  
 Jul 01/03


**BOEING**  
 COMPONENT  
 MAINTENANCE MANUAL

PART NUMBER	AIRLINE PART NO.	FIG.	ITEM	TTL REQ
MS35338-41		1	50	3
		2	45	3
		3	60	3
		4	60	3
M39029-1-16-20		1	90	30
		2	95	32
		3	100	32
		4	110	32
NAS1801-04-5		1	60	6
		2	55	6
		3	70	6
		4	70	6
NAS1801-06-5		4	70C	3
		1	45	3
		2	40	3
		3	55	3
NAS514P632-5P		4	55	3
		4	55C	3
		1	25	3
		2	20	3
PFSC35-38ASEMB		3	35	3
		4	35	3
		1	30	4
		2	25	4
RMA4812-160-40		3	40	4
		4	40	4
		1	65	6
		2	60	6
RSF116418		3	75	6
		4	75	6
		2	80	2
		4	95	2
SF6G6CBB5D		1	35	2
		2	30	2
		3	45	2
		4	45	2
S231T290-1016		1	10B	2
		1	10R	2
		3	20	2
		3	20L	2
S231T290-1017		1	10	2
S231T290-2017		1	10A	2
S231T290-3016		1	10G	2

73-21-86

ILLUSTRATED PARTS LIST

01.1

Page 1011

Jul 01/03



PART NUMBER	AIRLINE PART NO.	FIG.	ITEM	TTL REQ	
S231T290-4016		1	10C	2	
		1	10D	2	
		1	10E	2	
		1	10S	2	
		1	10T	2	
		1	10U	2	
		2	5	2	
		2	5B	2	
		2	5D	2	
		2	5F	2	
		3	20A	2	
		3	20B	2	
		3	20M	2	
		3	20N	2	
		4	20	2	
		4	20B	2	
		4	20D	2	
		4	20F	2	
	S231T290-4086		1	10J	2
			1	10K	2
			1	10W	2
			1	10X	2
			3	20D	2
			3	20E	2
		3	20Q	2	
S231T290-5016		3	20R	2	
		1	10F		
		1	10H		
		1	10N	2	
		2	5A		
		2	5C	2	
		2	5E	2	
S231T290-5086		4	20A	2	
		4	20E	2	
		1	10L	2	
		1	10Y	2	
		1	17A		
		3	20F	2	
		3	20S	2	
S231T290-803 S231T290-823		3	22A		
		1	5B	2	
		1	5	2	
		1	5A	2	
		2	3	2	
		3	15	2	
		4	15	2	

# 73-21-86

 ILLUSTRATED PARTS LIST  
 01.1 Page 1012  
 Jul 01/03


**BOEING**  
 COMPONENT  
 MAINTENANCE MANUAL

PART NUMBER	AIRLINE PART NO.	FIG.	ITEM	TTL REQ
S233T100-1092		3	5	
		3	5A	1
		3	5A	1
		4	5B	1
		4	5C	1
S233T100-1097		4	5	
		4	5A	1
		4	5A	1
TDH8119-1002		2	75	2
		4	90	2
000300-1646		2	80	2
		4	95	2
102-010-2		2	80	2
		4	95	2
233T3100-338		1	2K	
		4	1G	RF
233T3100-341		1	2L	
		3	1L	RF
233T3100-347		1	2M	
		4	1K	RF
233T3100-348		1	2N	
		3	1M	RF
233T3100-373		1	2P	
		4	1H	RF
233T3100-374		1	2Q	
		4	1J	RF
233T3234-1300		3	1F	RF
233T3234-1301		3	1G	RF
233T3234-1303		3	1H	RF
233T3234-1304		3	1J	RF
233T3234-1306		3	1K	RF
233T3242-1		1	1	RF
		3	10	1
233T3242-10		1	1E	RF
		3	10C	1
233T3242-1001		1	1R	RF
		3	10E	1
233T3242-1004		1	1S	RF
		3	10J	1
233T3242-1006		1	1T	RF
		3	10F	1
233T3242-1007		1	1U	
233T3242-1008		1	1V	RF
		3	10G	1
233T3242-1010		1	1W	RF
		3	10H	1

73-21-86

 ILLUSTRATED PARTS LIST  
 01.1 Page 1013  
 Jul 01/03

PART NUMBER	AIRLINE PART NO.	FIG.	ITEM	TTL REQ
233T3242-1013		1	1X	RF
		2	1B	RF
		4	10D	1
233T3242-1015		1	1Y	RF
		2	1C	RF
		4	10C	1
233T3242-11		1	1F	RF
233T3242-13		1	1H	RF
		2	1A	RF
		4	10A	1
233T3242-1300		4	10F	1
		1	1Z	RF
		1	2	RF
233T3242-1301		1	2A	RF
233T3242-1302		4	1C	RF
		1	2B	RF
		1	2C	RF
233T3242-1303		1	2D	RF
233T3242-1304		1	2D	RF
233T3242-1305		4	1D	RF
233T3242-1306		1	2G	
233T3242-1307		1	2H	
		4	1L	RF
		1	2J	
233T3242-1308		4	1M	RF
		1	1G	RF
		2	1	RF
233T3242-15		4	10	1
		4	10G	1
		2	15	1
233T3242-19		4	30	1
		1	20	1
		3	30	1
233T3242-2		2	90	1
		4	105	1
		1	16A	
233T3242-21		3	21A	
		1	16	
		3	21	
233T3242-22		2	6A	
		4	16A	
		2	6	
233T3242-23		4	16	
		3	10D	1
		4	10B	1
233T3242-24		4	10E	1
233T3242-25		1	85	1
233T3242-26		3	95	1
233T3242-27				
233T3242-3				

73-21-86

 ILLUSTRATED PARTS LIST  
 01.1 Page 1014  
 Jul 01/03


**BOEING**  
 COMPONENT  
 MAINTENANCE MANUAL

PART NUMBER	AIRLINE PART NO.	FIG.	ITEM	TTL REQ
233T3242-300		1	1J	RF
		3	1A	RF
233T3242-301		1	1K	RF
		3	1B	RF
233T3242-302		1	1N	RF
		4	1A	RF
233T3242-303		1	1L	RF
		3	1C	RF
233T3242-304		1	1M	RF
		3	1D	RF
233T3242-305		1	1P	RF
		4	1B	RF
233T3242-306		1	1Q	RF
		3	1E	RF
233T3242-307		1	2E	RF
		4	1E	RF
233T3242-308		1	2F	
		4	1F	RF
233T3242-4		1	1A	RF
		4	1N	RF
233T3242-6		1	1B	RF
		3	10A	1
		4	10H	1
233T3242-7		1	1C	RF
233T3242-8		1	1D	RF
		3	10B	1
233T6200-142		1	80	1
		3	90	1
233T6200-162		2	85	1
		4	100	1
293162		1	65	6
		2	60	6
		3	75	6
		4	75	6
433-100-004		1	5	2
		1	5A	2
		2	3	2
		3	15	2
		4	15	2
433-673-1001-1016		1	10B	2
		1	10R	2
		3	20	2
		3	20L	2
433-673-1001-1017		1	10	2

73-21-86

 ILLUSTRATED PARTS LIST  
 01.1 Page 1015  
 Jul 01/03

PART NUMBER	AIRLINE PART NO.	FIG.	ITEM	TTL REQ	
433-673-1004-4016		1	10C	2	
		1	10D	2	
		1	10E	2	
		1	10S	2	
		1	10T	2	
		1	10U	2	
		2	5	2	
		2	5B	2	
		2	5D	2	
		2	5F	2	
		3	20A	2	
		3	20B	2	
		3	20M	2	
		3	20N	2	
		4	20	2	
		4	20B	2	
		4	20D	2	
		4	20F	2	
	433-673-1004-4086		1	10J	2
			1	10K	2
		1	10W	2	
		1	10X	2	
		3	20D	2	
		3	20E	2	
		3	20Q	2	
		3	20R	2	
4336731004-4016			3	20H	2
4336731004-4216			3	20P	2
4336731004-4286		1	10Q	2	
		1	10V	2	
69B46200-11		4	20C	2	
69B46200-12		3	20K	2	
800-00121-1		2	50		
		1	55	3	
		2	50A	3	
		3	65	3	
		4	65	3	
800-002855		1	15A	1	
		3	25A	1	
800-003636		4	25A	1	
		3	5A	1	
	4	5C	1		
	4	5A	1		
	4	5B	1		

73-21-86

 ILLUSTRATED PARTS LIST  
 01.1 Page 1016  
 Jul 01/03


**BOEING**  
 COMPONENT  
 MAINTENANCE MANUAL

PART NUMBER	AIRLINE PART NO.	FIG.	ITEM	TTL REQ		
800000121-1		1	15	1		
		2	10	1		
		3	25	1		
		4	25	1		
851-30768-2017		1	10A	2		
851-30768-3016		1	10G	2		
851-30768-803		1	5B	2		
851-35100-5016		1	10M			
		1	10N	2		
		2	5C	2		
		2	5E	2		
		2	7A			
		3	20C			
		4	17A			
		4	20A	2		
		4	20E	2		
		851-35100-5086		1	10P	2
				1	10Z	2
				1	17B	
				3	20G	2
				3	20T	2
3	22B					

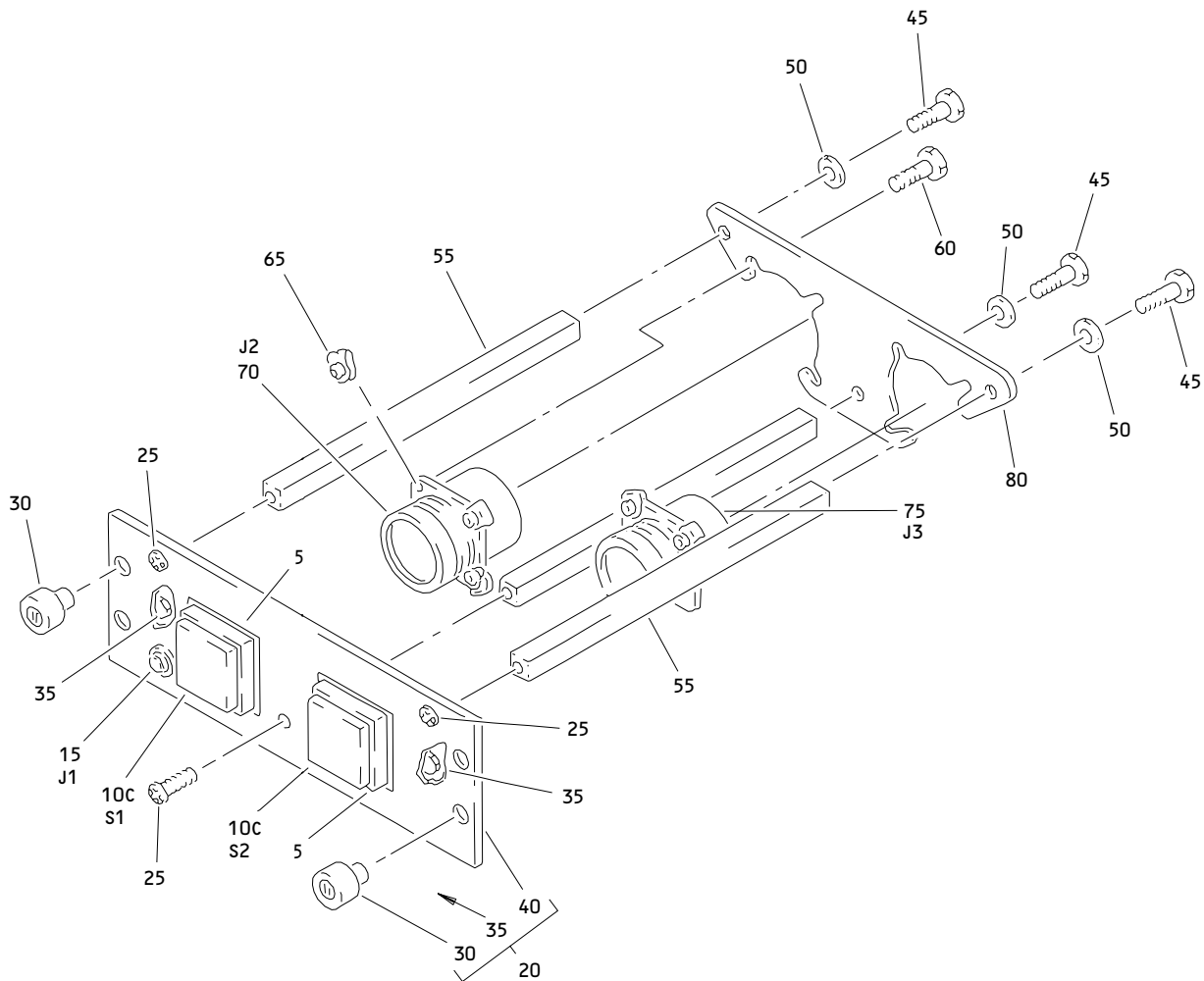
# 73-21-86

ILLUSTRATED PARTS LIST

01.1

Page 1017

Jul 01/03



EEC Control Panel Assembly, M10761  
 Figure 1

**73-21-86**

ILLUSTRATED PARTS LIST  
 01.101 Page 1018  
 Jul 01/03


**BOEING**  
 COMPONENT  
 MAINTENANCE MANUAL

FIG. & ITEM	PART NO.	AIRLINE PART NUMBER	NOMENCLATURE 1234567	EFF CODE	QTY PER ASSY
01- -1	233T3242-1		PANEL ASSY-EEC CONT M10761 (PRE SB 233T3242-73-02)	A	RF
-1A	233T3242-4		PANEL ASSY-EEC CONT M10761 (PRE SB 233T3242-73-01) (PRE CSB 233T3242-73-02)	B	RF
-1B	233T3242-6		PANEL ASSY-EEC CONT M10761 (PRE SB 233T3242-73-02) (PRE CSB 233T3242-73-01)	C	RF
-1C	233T3242-7		PANEL ASSY-EEC CONT M10761	D	RF
-1D	233T3242-8		PANEL ASSY-EEC CONT M10761 (PRE SB 233T3242-73-02)	E	RF
-1E	233T3242-10		PANEL ASSY-EEC CONT M10761 (PRE SB 233T3242-73-02)	F	RF
-1F	233T3242-11		PANEL ASSY-EEC CONT M10761	G	RF
-1G	233T3242-15		PANEL ASSY-EEC CONT M10761 (PRE SB 233T3242-73-02) (POST SB 233T3242-73-01) (FOR DETAILS SEE FIG. 2)	H	RF
-1H	233T3242-13		PANEL ASSY-EEC CONT M10761 (PRE SB 233T3242-73-02) (POST SB 233T3242-73-01) (FOR DETAILS SEE FIG. 2)	J	RF
-1J	233T3242-300		PANEL ASSY-EEC CONT M10761 (PRE SB 233T3242-73-02) (FOR DETAILS SEE FIG. 3)	K	RF
-1K	233T3242-301		PANEL ASSY-EEC CONT M10761 (PRE SB 233T3242-73-02) (FOR DETAILS SEE FIG. 3)	L	RF
-1L	233T3242-303		PANEL ASSY-EEC CONT M10761 (PRE SB 233T3242-73-02) (FOR DETAILS SEE FIG. 3)	M	RF
-1M	233T3242-304		PANEL ASSY-EEC CONT M10761 (PRE SB 233T3242-73-02) (FOR DETAILS SEE FIG. 3)	N	RF
-1N	233T3242-302		PANEL ASSY-EEC CONT M10761 (PRE SB 233T3242-73-02) (FOR DETAILS SEE FIG. 4)	P	RF
-1P	233T3242-305		PANEL ASSY-EEC CONT M10761 (PRE SB 233T3242-73-02) (FOR DETAILS SEE FIG. 4)	Q	RF
-1Q	233T3242-306		PANEL ASSY-EEC CONT M10761 (FOR DETAILS SEE FIG. 3)	R	RF
-1R	233T3242-1001		PANEL ASSY-EEC CONT M10761 (POST SB 233T3242-73-02)	S	RF

73-21-86

 ILLUSTRATED PARTS LIST  
 01.101 Page 1019  
 Jul 01/03



FIG. & ITEM	PART NO.	AIRLINE PART NUMBER	NOMENCLATURE 1234567	EFF CODE	QTY PER ASSY
01- -1S	233T3242-1004		PANEL ASSY-EEC CONT M10761 (POST SB 233T3242-73-02)	T	RF
-1T	233T3242-1006		PANEL ASSY-EEC CONT M10761 (POST SB 233T3242-73-02)	U	RF
-1U	233T3242-1007		DELETED		
-1V	233T3242-1008		PANEL ASSY-EEC CONT M10761 (POST SB 233T3242-73-02)	W	RF
-1W	233T3242-1010		PANEL ASSY-EEC CONT M10761 (POST SB 233T3242-73-02)	X	RF
-1X	233T3242-1013		PANEL ASSY-EEC CONT M10761 (POST SB 233T3242-73-02) (FOR DETAILS SEE FIG. 2)	Y	RF
-1Y	233T3242-1015		PANEL ASSY-EEC CONT M10761 (POST SB 233T3242-73-02) (FOR DETAILS SEE FIG. 2)	Z	RF
-1Z	233T3242-1300		PANEL ASSY-EEC CONT M10761 (POST SB 233T3242-73-02) (FOR DETAILS SEE FIG. 3)	AA	RF
-2	233T3242-1301		PANEL ASSY-EEC CONT M10761 (POST SB 233T3242-73-02) (FOR DETAILS SEE FIG. 3)	AB	RF
-2A	233T3242-1302		PANEL ASSY-EEC CONT M10761 (POST SB 233T3242-73-02) (FOR DETAILS SEE FIG. 4)	AC	RF
-2B	233T3242-1303		PANEL ASSY-EEC CONT M10761 (POST SB 233T3242-73-02) (FOR DETAILS SEE FIG. 3)	AD	RF
-2C	233T3242-1304		PANEL ASSY-EEC CONT M10761 (POST SB 233T3242-73-02) (FOR DETAILS SEE FIG. 3)	AE	RF
-2D	233T3242-1305		PANEL ASSY-EEC CONT M10761 (POST SB 233T3242-73-02) (FOR DETAILS SEE FIG. 4)	AF	RF
R -2E	233T3242-307		PANEL ASSY-EEC CONT M10761 (FOR DETAILS SEE FIG. 4)	AG	RF

73-21-86

 ILLUSTRATED PARTS LIST  
 01.1 Page 1020  
 Jul 01/03


**BOEING**  
 COMPONENT  
 MAINTENANCE MANUAL

FIG. & ITEM	PART NO.	AIRLINE PART NUMBER	NOMENCLATURE 1234567	EFF CODE	QTY PER ASSY
01- -2F	233T3242-308		PANEL ASSY-EEC CONT M10761 (FOR DETAILS SEE FIG. 4)	AH	
-2G	233T3242-1306		PANEL ASSY-EEC CONT M10761 (POST CSB 233T3242-73-02) (FOR DETAILS SEE FIG. 3)	AJ	
-2H	233T3242-1307		PANEL ASSY-EEC CONT M10761 (POST CSB 233T3242-73-02) (FOR DETAILS SEE FIG. 4)	AK	
-2J	233T3242-1308		PANEL ASSY-EEC CONT M10761 (POST CSB 233T3242-73-02) (FOR DETAILS SEE FIG. 4)	AL	
-2K	233T3100-338		PANEL ASSY-EEC CONT M10761 (PRE CSB 233T3242-73-02) (FOR DETAILS SEE FIG. 4)	AM	
-2L	233T3100-341		PANEL ASSY-EEC CONT M10761 (PRE CSB 233T3242-73-02) (FOR DETAILS SEE FIG. 3)	AN	
-2M	233T3100-347		PANEL ASSY-EEC CONT M10761 (PRE CSB 233T3242-73-02) (FOR DETAILS SEE FIG. 4)	AP	
-2N	233T3100-348		PANEL ASSY-EEC CONT M10761 (PRE CSB 233T3242-73-02) (FOR DETAILS SEE FIG. 3)	AQ	
-2P	233T3100-373		PANEL ASSY-EEC CONT M10761 (PRE CSB 233T3242-73-02) (FOR DETAILS SEE FIG. 4)	AR	
-2Q	233T3100-374		PANEL ASSY-EEC CONT M10761 (PRE CSB 233T3242-73-02) (FOR DETAILS SEE FIG. 4)	AS	

73-21-86

 ILLUSTRATED PARTS LIST  
 01.1 Page 1021  
 Jul 01/03

FIG. & ITEM	PART NO.	AIRLINE PART NUMBER	NOMENCLATURE 1234567	EFF CODE	QTY PER ASSY
01-5	433-100-004		. GUARD-SWITCH (V81590) (SPEC S231T290-823)	A-F, S-U,W ,X	2
-5A	433-100-004		. GUARD-SWITCH (V81590) (SPEC S231T290-823) (ITEM 10A TOGETHER WITH ITEM 5B OR ITEM 5A IS OPTIONAL TO ITEM 10 WITH ITEM 5A)	G	2
5B	851-30768-803		. GUARD-SWITCH (V96182) (SPEC S231T290-803) (ITEM 10A TOGETHER WITH ITEM 5B OR ITEM 5A IS OPTIONAL TO ITEM 10 WITH ITEM 5A)	G	2
-10	BCREF7607		. SWITCH-LIGHTED PUSH BUTTON IND (V81590) (433-673-1001-1017) (S1, S2) (SPEC S231T290-1017) (ITEM 10A TOGETHER WITH ITEM 5B OR ITEM 5A IS OPTIONAL TO ITEM 10 WITH ITEM 5A)	G	2
-10A	851-30768-2017		. SWITCH-LIGHTED PUSH BUTTON IND (V96182) (S1, S2) (SPEC S231T290-2017) (ITEM 10A TOGETHER WITH ITEM 5B OR ITEM 5A IS OPTIONAL TO ITEM 10 WITH ITEM 5A)	G	2

# 73-21-86

 ILLUSTRATED PARTS LIST  
 01.101 Page 1022  
 Jul 01/03


**BOEING**  
 COMPONENT  
 MAINTENANCE MANUAL

FIG. & ITEM	PART NO.	AIRLINE PART NUMBER	NOMENCLATURE 1234567	EFF CODE	QTY PER ASSY
01- -10B	BCREF7606		.SWITCH-LIGHTED PUSH BUTTON IND (V81590) (433-673-1001-1016) (S1, S2) (SPEC S231T290-1016) (OPT ITEM 10C)	A	2
10C	BCREFA0505		.SWITCH-LIGHTED PUSH BUTTON IND (V81590) (433-673-1004-4016) (S1, S2) (SPEC S231T290-4016) (USE WITH CONFIGURATION (OPT ITEM 10B)	A	2
-10D	BCREFA0505		.SWITCH-LIGHTED PUSH BUTTON IND (V81590) (433-673-1004-4016) (S1, S2) (SPEC S231T290-4016)	B	2
-10E	BCREFA0505		.SWITCH-LIGHTED PUSH BUTTON IND (V81590) (433-673-1004-4016) (S1, S2) (SPEC S231T290-4016) (OPT ITEM 10Q)	C	2
-10F -10G	S231T290-5016 851-30768-3016		DELETED .SWITCH-LIGHTED PUSH BUTTON IND (V96182) (S1, S2) (SPEC S231T290-3016) (OPT ITEM 10N)	D	2

73-21-86

 ILLUSTRATED PARTS LIST  
 01.101 Page 1023  
 Jul 01/03

FIG. & ITEM	PART NO.	AIRLINE PART NUMBER	NOMENCLATURE 1234567	EFF CODE	QTY PER ASSY
01- -10H -10J	S231T290-5016 BCREFA0538		DELETED .SWITCH-LIGHTED PUSH BUTTON IND (V81590) (433-673-1004-4086) (S1, S2) (SPEC S231T290-4086)	E	2
-10K	BCREFA0538		.SWITCH-LIGHTED PUSH BUTTON IND (V81590) (433-673-1004-4086) (S1, S2) (SPEC S231T290-4086) (OPT ITEMS 10L, 10P)	F	2
-10L	S231T290-5086		.SWITCH-LIGHTED PUSH BUTTON IND (S1, S2) (OPT ITEMS 10K, 10P)	F	2
-10M -10N	851-35100-5016 851-35100-5016		DELETED .SWITCH-LIGHTED PUSH BUTTON IND (V96182) (S1, S2) (SPEC S231T290-5016) (OPT ITEM 10G)	D	2
-10P	851-35100-5086		.SWITCH-LIGHTED PUSHBUTTON IND (V96182) (S1, S2) (OPT ITEMS 10K, 10L)	F	2

# 73-21-86

 ILLUSTRATED PARTS LIST  
 01.101 Page 1024  
 Jul 01/03


**BOEING**  
 COMPONENT  
 MAINTENANCE MANUAL

FIG. & ITEM	PART NO.	AIRLINE PART NUMBER	NOMENCLATURE 1234567	EFF CODE	QTY PER ASSY
01- -10Q	4336731004-4216		.SWITCH-LIGHTED PUSH BUTTON IND (V81590) (S1, S2) (USE WITH CONFIGURATION (OPT ITEM 10E)	C	2
R -10R	BCREF7606		.SWITCH-LIGHTED PUSH BUTTON IND (USE WITH CONFIGURATION "D" MASTER MODULE. SEE REPAIR FOR ADDITIONAL INFORMATION) (V81590) (433-673-1001-1016) (S1, S2) (SPEC S231T290-1016) (OPT ITEM 10S)	S	2
R 10S	BCREFA0505		.SWITCH-LIGHTED PUSH BUTTON IND (USE WITH CONFIGURATION "D" MASTER MODULE. SEE REPAIR FOR ADDITIONAL INFORMATION) (V81590) (433-673-1004-4016) (S1, S2) (SPEC S231T290-4016) (OPT ITEM 10R)	S	2
R -10T	BCREFA0505		.SWITCH-LIGHTED PUSH BUTTON IND (USE WITH CONFIGURATION "D" MASTER MODULE. SEE REPAIR FOR ADDITIONAL INFORMATION) (V81590) (433-673-1004-4016) (S1, S2) (SPEC S231T290-4016)	T	2

73-21-86

 ILLUSTRATED PARTS LIST  
 01.101 Page 1025  
 Jul 01/03

**COMPONENT  
MAINTENANCE MANUAL**

FIG. & ITEM	PART NO.	AIRLINE PART NUMBER	NOMENCLATURE	EFF CODE	QTY PER ASSY
R 01-10U	BCREFA0505		1234567 .SWITCH-LIGHTED PUSH BUTTON IND (USE WITH CONFIGURATION "D" MASTER MODULE. SEE REPAIR FOR ADDITIONAL INFORMATION) (V81590) (433-673-1004-4016) (S1, S2) (SPEC S231T290-4016) (OPT ITEM 10V)	U	2
R -10V	4336731004-4216		.SWITCH-LIGHTED PUSH BUTTON IND (USE WITH CONFIGURATION "D" MASTER MODULE. SEE REPAIR FOR ADDITIONAL INFORMATION) (V81590) (S1, S2) (OPT ITEM 10U)	U	2
R -10W	BCREFA0538		.SWITCH-LIGHTED PUSH BUTTON IND (USE WITH CONFIGURATION "D" MASTER MODULE. SEE REPAIR FOR ADDITIONAL INFORMATION) (V81590) (433-673-1004-4086) (S1, S2) (SPEC S231T290-4086)	W	2
R -10X	BCREFA0538		.SWITCH-LIGHTED PUSH BUTTON IND (USE WITH CONFIGURATION "D" MASTER MODULE. SEE REPAIR FOR ADDITIONAL INFORMATION) (V81590) (433-673-1004-4086) (S1, S2) (SPEC S231T290-4086) (OPT ITEMS 10Y, 10Z)	X	2
R -10Y	S231T290-5086		.SWITCH-LIGHTED PUSH BUTTON IND (S1, S2) (OPT ITEMS 10X, 10Z)	X	2

# 73-21-86

 ILLUSTRATED PARTS LIST  
 01.101 Page 1026  
 Jul 01/03

**BOEING**  
 COMPONENT  
 MAINTENANCE MANUAL

FIG. & ITEM	PART NO.	AIRLINE PART NUMBER	NOMENCLATURE 1234567	EFF CODE	QTY PER ASSY
R 01- -10Z	851-35100-5086		.SWITCH-LIGHTED PUSHBUTTON IND (V96182) (S1, S2) (OPT ITEMS 10X, 10Y)	X	2
15	800000121-1		.CONNECTOR- (V05617) (J1)	A,B, D-G,S ,T,W, X	1
-15A	800-000121-1		.CONNECTOR- (V05617) (J1)	C,U	1
16	233T3242-22		DELETED		
-16A	233T3242-21		DELETED		
17	BCREFA0538		DELETED		
-17A	S231T290-5086		DELETED		
-17B	851-35100-5086		DELETED		
20	233T3242-2		.BASEPLATE ASSY	A-G, S-U,W ,X	1
25	NAS514P632-5P		ATTACHING PARTS .SCREW  -----*-----	A-G, S-U,W	3
30	PFSC35-38ASEMB		..STUD- (V72794) (SPEC BACS21DX1B)	,X A-G, S-U,W	4
35	SF6G6CBB5D		..NUT- (V12324)	,X A-G, S-U,W	2

**73-21-86**

ILLUSTRATED PARTS LIST  
 01.101 Page 1027  
 Jul 01/03



FIG. & ITEM	PART NO.	AIRLINE PART NUMBER	NOMENCLATURE 1234567	EFF CODE	QTY PER ASSY
01-40	BACP10U0187N		. .BASEPLATE	A-G, S-U,W ,X	1
45	NAS1801-06-5		. SCREW	A,B, D-G,S ,T,W, X	3
-45A	BACS12CK06U5		. SCREW	C,U	3
50	MS35338-41		. WASHER	A,B, D-G,S ,T,W, X	3
-50A	BACW10EC06C		. WASHER	C,U	3
55	69B46200-12		. STANDOFF	A-G, S-U,W ,X	3
60	NAS1801-04-5		. SCREW	A,B, D-G,S ,T,W, X	6
-60A	BACS12CK04U5		. SCREW	C,U	6
65	K19798-04		. NUT- (V15653) (SPEC BACN10NW1) (OPT RMA4812-160-40 (V72962)) (OPT 293162 (V60119))	A-G, S-U,W ,X	6
70	BACC45FN16-24P		. CONNECTOR- (J2)	A-G, S-U,W ,X	1
75	BACC45FN16-24P7		. CONNECTOR- (J3)	A-G, S-U,W ,X	1

73-21-86

 ILLUSTRATED PARTS LIST  
 01.101 Page 1028  
 Jul 01/03


**BOEING**  
 COMPONENT  
 MAINTENANCE MANUAL

FIG. & ITEM	PART NO.	AIRLINE PART NUMBER	NOMENCLATURE 1234567	EFF CODE	QTY PER ASSY
01-80	233T6200-142		.BRACKET-CONNECTOR	A-G, S-U,W ,X	1
-85	233T3242-3		.WIRE BUNDLE ASSY	A-G, S-U,W ,X	1
90	M39029-1-16-20		..CONTACT-PIN (V952966)  BOEING LETTER HISTORY	A-G, S-U,W ,X	30

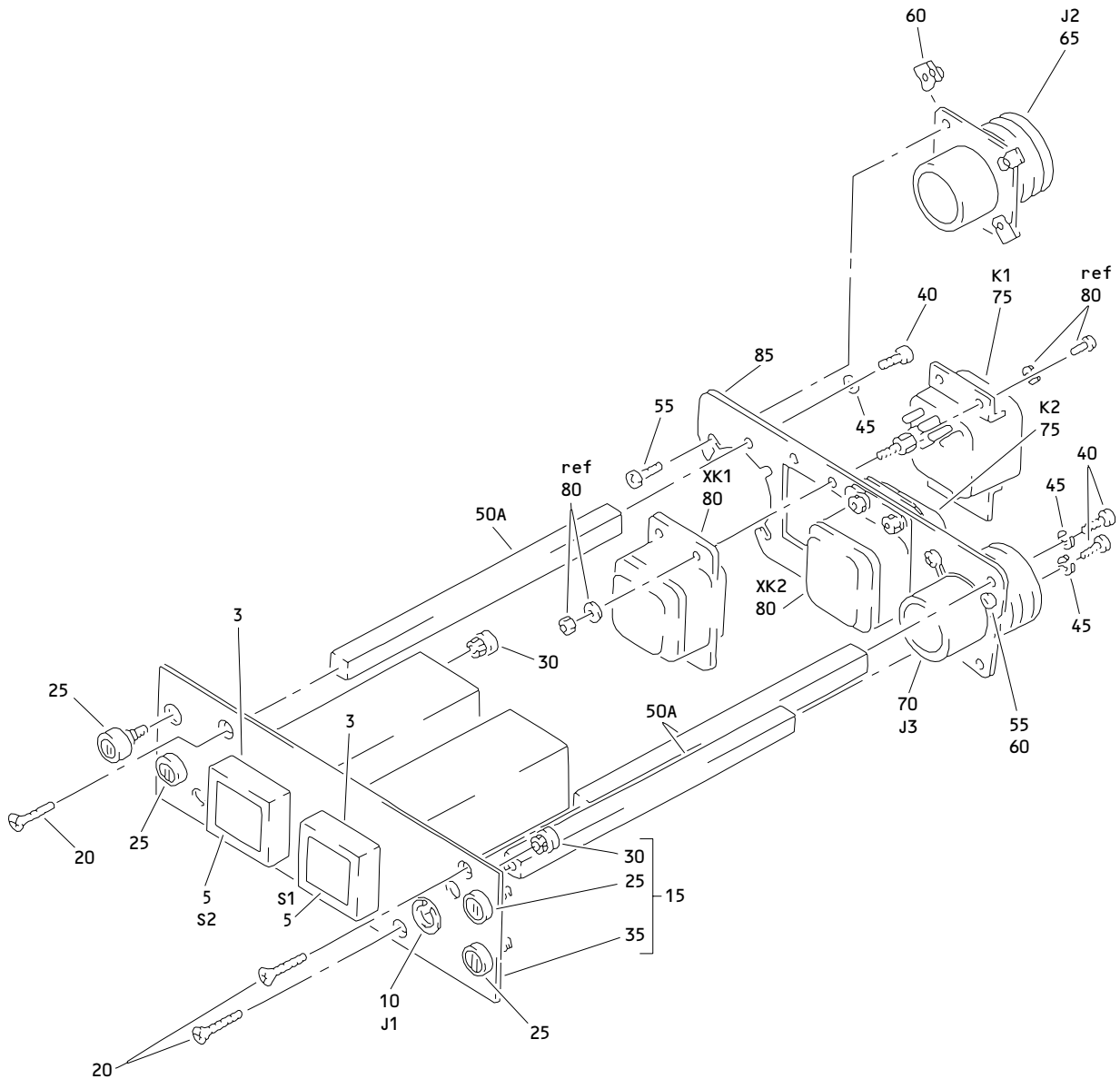
- Item Not Illustrated

# 73-21-86

ILLUSTRATED PARTS LIST

01.101 Page 1029

Jul 01/03



EEC Control Panel Assembly, M10761  
 Figure 2

**73-21-86**

ILLUSTRATED PARTS LIST  
 01.101 Page 1030  
 Jul 01/03


**BOEING**  
 COMPONENT  
 MAINTENANCE MANUAL

FIG. & ITEM	PART NO.	AIRLINE PART NUMBER	NOMENCLATURE 1234567	EFF CODE	QTY PER ASSY
02- -1	233T3242-15		PANEL ASSY-EEC CONT M10761 (POST SB 233T3242-73-01) (PRE SB 233T3242-73-02)	H	RF
-1A	233T3242-13		PANEL ASSY-EEC CONT M10761 (PRE SB 233T3242-73-02) (POST SB 233T3242-73-01)	J	RF
-1B	233T3242-1013		PANEL ASSY-EEC CONT M10761 (POST SB 233T3242-73-02)	Y	RF
-1C	233T3242-1015		PANEL ASSY-EEC CONT M10761 (POST SB 233T3242-73-02)	Z	RF
3	433-100-004		.GUARD-SWITCH (V81590) (SPEC S231T290-823)	H,J,Y ,Z	2
5	BCREFA0505		.SWITCH-LIGHTED PUSH BUTTON IND (V81590) (433-673-1004-4016) (S1, S2) (SPEC S231T290-4016) (OPT ITEM 5C)	H	2
-5A	S231T290-5016		DELETED		
-5B	BCREFA0505		.SWITCH-LIGHTED PUSH BUTTON IND (V81590) (433-673-1004-4016) (S1, S2) (SPEC S231T290-4016)	J	2
-5C	851-35100-5016		.SWITCH-LIGHTED PUSH BUTTON IND (V96182) (S1, S2) (SPEC S231T290-5016) (OPT ITEM 5)	H	2
R -5D	BCREFA0505		.SWITCH-LIGHTED PUSH BUTTON IND (USE WITH CONFIGURATION "D" MASTER MODULE. SEE REPAIR FOR ADDITIONAL INFORMATION) (V81590) (433-673-1004-4016) (S1, S2) (SPEC S231T290-4016) (OPT ITEM 5E)	Z	2

73-21-86

 ILLUSTRATED PARTS LIST  
 01.1 Page 1031  
 Jul 01/03

FIG. & ITEM	PART NO.	AIRLINE PART NUMBER	NOMENCLATURE	EFF CODE	QTY PER ASSY
R 02- -5E	851-35100-5016		.SWITCH-LIGHTED PUSH BUTTON IND (V96182) (S1, S2) (SPEC S231T290-5016) (OPT ITEM 5D)	Z	2
R -5F	BCREFA0505		.SWITCH-LIGHTED PUSH BUTTON IND (USE WITH CONFIGURATION "D" MASTER MODULE. SEE REPAIR FOR ADDITIONAL INFORMATION) (V81590) (433-673-1004-4016) (S1, S2) (SPEC S231T290-4016)	Y	2
6	233T3242-24		DELETED		
-6A	233T3242-23		DELETED		
7	BCREFA0505		DELETED		
-7A	851-35100-5016		DELETED		
10	800000121-1		.CONNECTOR- (V05617) (J1)	H, J, Y , Z	1
15	233T3242-19		.BASEPLATE ASSY	H, J, Y , Z	1
20	NAS514P632-5P		ATTACHING PARTS .SCREW	H, J, Y , Z	3
			-----*-----		

73-21-86

 ILLUSTRATED PARTS LIST  
 01.101 Page 1032  
 Jul 01/03


**BOEING**  
 COMPONENT  
 MAINTENANCE MANUAL

FIG. & ITEM	PART NO.	AIRLINE PART NUMBER	NOMENCLATURE 1234567	EFF CODE	QTY PER ASSY
02-25	PFSC35-38ASEMB		..STUD- (V72794) (SPEC BACS21DX1B)	H,J,Y ,Z	4
30	SF6G6CBB5D		..NUT- (V12324)	H,J,Y ,Z	2
35	BACP10U0187N		..BASEPLATE	H,J,Y ,Z	1
40	NAS1801-06-5		.SCREW	H,J,Y ,Z	3
45	MS35338-41		.WASHER	H,J,Y ,Z	3
50	69B46200-11		DELETED		
50A	69B46200-12		.STANDOFF	H,J,Y ,Z	3
55	NAS1801-04-5		.SCREW	H,J,Y ,Z	6
60	K19798-04		.NUT- (V15653) (SPEC BACN10NW1) (OPT RMA4812-160-40 (V72962)) (OPT 293162 (V60119))	H,J,Y ,Z	6
65	BACC45FN16-24P		.CONNECTOR- (J2)	H,J,Y ,Z	1
70	BP06P16-24P7		.CONNECTOR- (V05063) (SPEC BACC45N16-24P7) (OPT BP06P16-24P7 (V07261)) (OPT BP06P16-24P7 (V20441)) (OPT BP06P16-24P7 (V28523)) (OPT BP06P16-24P7 (V54165)) (OPT BP06P16-24P7 (V77820)) (J3)	H,J,Y ,Z	1

73-21-86

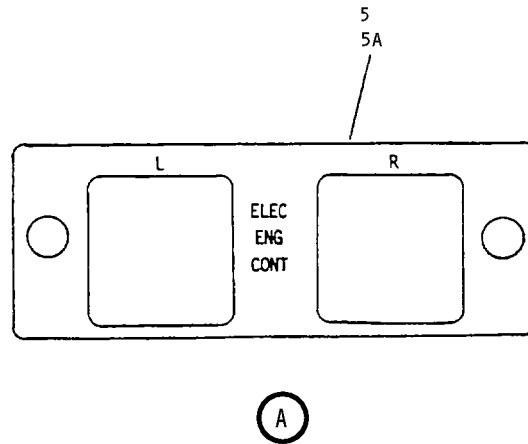
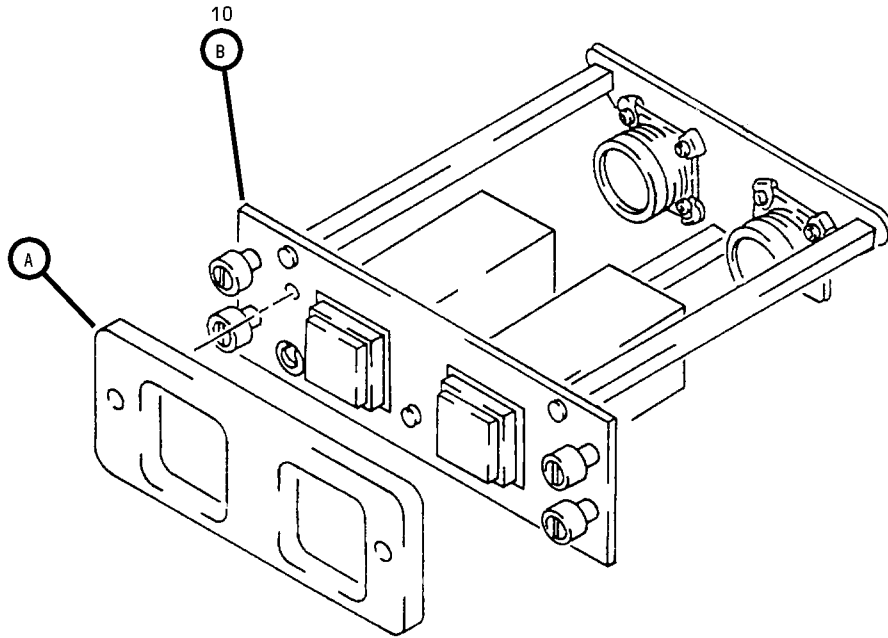
 ILLUSTRATED PARTS LIST  
 01.101 Page 1033  
 Jul 01/03

FIG. & ITEM	PART NO.	AIRLINE PART NUMBER	NOMENCLATURE 1234567	EFF CODE	QTY PER ASSY
02-75	TDH8119-1002		.RELAY- (V35344) (K1, K2)	H,J,Y ,Z	2
80	000300-1646		.SOCKET- (V05574) (SPEC BACS16W10A) (OPT 102-010-2 (V09922)) (OPT RSF116418 (V58982)) (XK1, XK2)	H,J,Y ,Z	2
85	233T6200-162		.SUPPORT	H,J,Y ,Z	1
-90	233T3242-20		.WIRE BUNDLE ASSY	H,J,Y ,Z	1
-95	M39029-1-16-20		..CONTACT-PIN (V95266)	H,J,Y ,Z	32

- Item Not Illustrated

# 73-21-86

ILLUSTRATED PARTS LIST  
 01.101 Page 1034  
 Jul 01/03

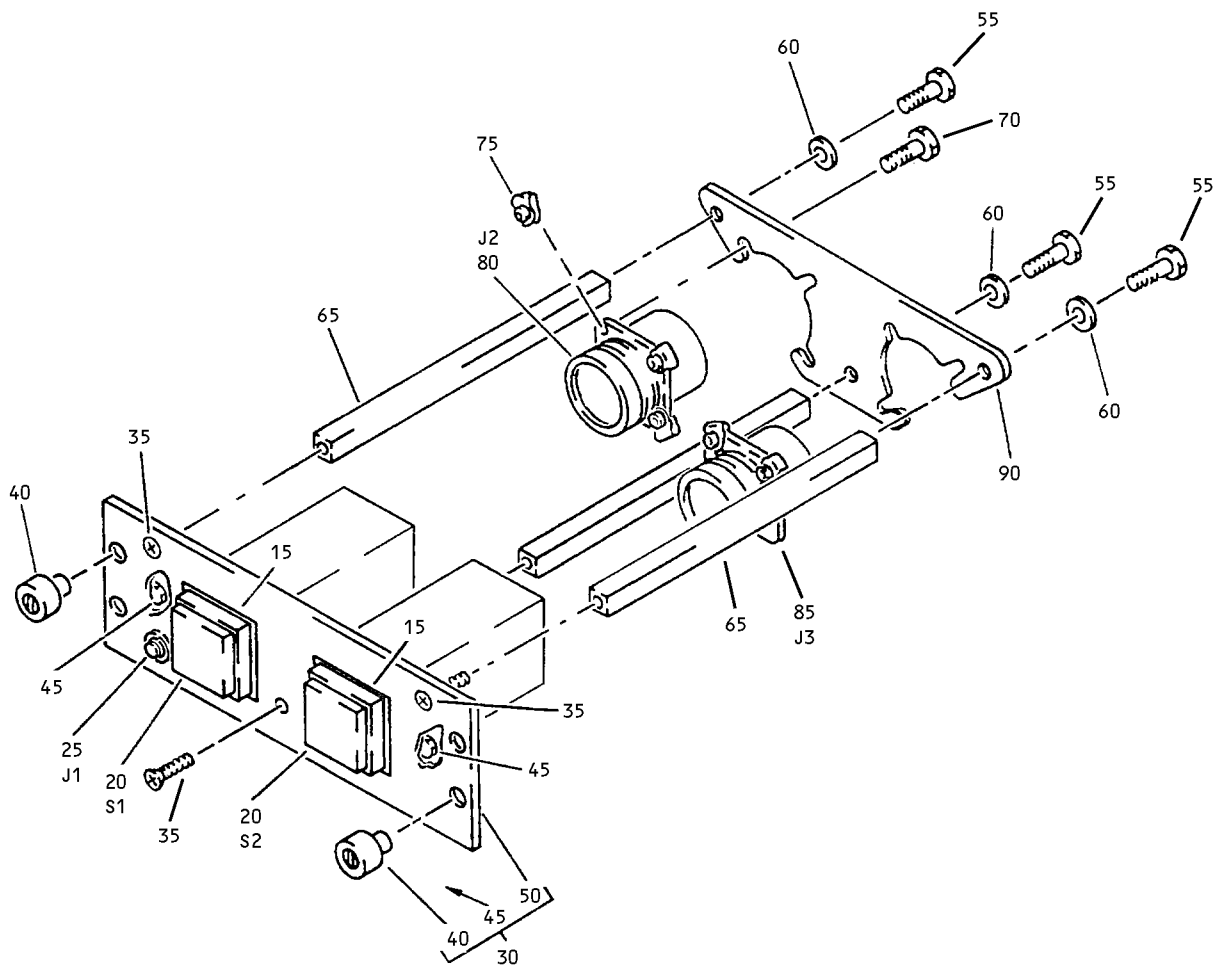


EEC Control Panel Assembly, M10761  
Figure 3 (Sheet 1)

**73-21-86**

ILLUSTRATED PARTS LIST  
01.101 Page 1035  
Jul 01/03





(B)

EEC Control Panel Assembly, M10761  
 Figure 3 (Sheet 2)

**73-21-86**

ILLUSTRATED PARTS LIST  
 01.101 Page 1036  
 Jul 01/03


**BOEING**  
 COMPONENT  
 MAINTENANCE MANUAL

FIG. & ITEM	PART NO.	AIRLINE PART NUMBER	NOMENCLATURE 1234567	EFF CODE	QTY PER ASSY
03-					
-1A	233T3242-300		PANEL ASSY-EEC CONT M10761 (PRE SB 233T3242-73-02)	K	RF
-1B	233T3242-301		PANEL ASSY-EEC CONT M10761 (PRE SB 233T3242-73-02)	L	RF
-1C	233T3242-303		PANEL ASSY-EEC CONT M10761 (PRE SB 233T3242-73-02)	M	RF
-1D	233T3242-304		PANEL ASSY-EEC CONT M10761 (PRE SB 233T3242-73-02)	N	RF
-1E	233T3242-306		PANEL ASSY-EEC CONT M10761	R	RF
-1F	233T3234-1300		PANEL ASSY-EEC CONT M10761 (POST SB 233T3234-73-02)	AA	RF
-1G	233T3234-1301		PANEL ASSY-EEC CONT M10761 (POST SB 233T3242-73-02)	AB	RF
-1H	233T3234-1303		PANEL ASSY-EEC CONT M10761 (POST SB 233T3242-73-02)	AD	RF
-1J	233T3234-1304		PANEL ASSY-EEC CONT M10761 (POST SB 233T3242-73-02)	AE	RF
-1K	233T3234-1306		.PANEL ASSY-EEC CONT M10761 (POST SB 233T3242-73-02)	AJ	RF
-1L	233T3100-341		.PANEL ASSY-EEC CONT M10761 (PRE SB 233T3242-73-02)	AN	RF
-1M	233T3100-348		.PANEL ASSY-EEC CONT M10761 (PRE SB 233T3242-73-02)	AQ	RF
5	S233T100-1092		DELETED		
5A	800-002855		.LIGHTPLATE- (V05617) (SPEC S233T100-1092) (OPT S233T100-1092 (V51896)) (OPT (V05617), (V98140))	K-N,R AA,AB AD,AE AJ,AN AQ	1
10	233T3242-1		.PANEL ASSY- (PRE SB 233T3242-73-02)	K	1
-10A	233T3242-6		.PANEL ASSY- (PRE SB 233T3242-73-02)	L	1
-10B	233T3242-8		.PANEL ASSY- (PRE SB 233T3242-73-02)	M,AQ	1
-10C	233T3242-10		.PANEL ASSY- (PRE SB 233T3242-73-02)	N,AN	1
-10D	233T3242-25		.PANEL ASSY-EEC CONT M10761	R	1
R -10E	233T3242-1001		.PANEL ASSY- (POST SB 233T3242-73-02)	AA	1

73-21-86

 ILLUSTRATED PARTS LIST  
 01.1 Page 1037  
 Jul 01/03

FIG. & ITEM	PART NO.	AIRLINE PART NUMBER	NOMENCLATURE 1234567	EFF CODE	QTY PER ASSY
R 03-10F	233T3242-1006		.PANEL ASSY- (POST SB 233T3242-73-02)	AB	1
R -10G	233T3242-1008		.PANEL ASSY- (POST SB 233T3242-73-02)	AD	1
R -10H	233T3242-1010		.PANEL ASSY- (POST SB 233T3242-73-02)	AE	1
-10J	233T3242-1004		.PANEL ASSY- (PRE SB 233T3242-73-02) (FOR DETAILS SEE FIG. 1)	AJ	1
15	433-100-004		..GUARD-SWITCH (V81590) (SPEC S231T290-823)	K-N,R AA,AB AD,AE AN,AQ	2
20	BCREF7606		..SWITCH-LIGHTED PUSH BUTTON IND (V81590) (433-673-1001-1016) (S1, S2) (SPEC S231T290-1016) (OPT ITEM 20A)	K	2
-20A	BCREFA0505		..SWITCH-LIGHTED PUSH BUTTON IND (V81590) (433-673-1004-4016) (S1, S2) (SPEC S231T290-4016) (OPT ITEM 20)	K	2
-20B	BCREFA0505		.SWITCH-LIGHTED PUSH BUTTON IND (V81590) (433-673-1004-4016) (S1, S2) (SPEC S231T290-4016) (OPT ITEM 20H)	L	2

73-21-86

 ILLUSTRATED PARTS LIST  
 01.1 Page 1038  
 Jul 01/03


**BOEING**  
 COMPONENT  
 MAINTENANCE MANUAL

FIG. & ITEM	PART NO.	AIRLINE PART NUMBER	NOMENCLATURE 1234567	EFF CODE	QTY PER ASSY
03- -20C -20D	851-35100-5016 BCREFA0538		DELETED ..SWITCH-LIGHTED PUSH BUTTON IND (V81590) (433-673-1004-4086) (S1, S2) (OPT ITEM 20J) (SPEC S231T290-4086)	M,AQ	2
-20E	BCREFA0538		..SWITCH-LIGHTED PUSH BUTTON IND (V81590) (433-673-1004-4086) (S1, S2) (SPEC S231T290-4086) (OPT ITEMS 20F, 20G)	N,AN	2
-20F	S231T290-5086		..SWITCH-LIGHTED PUSH BUTTON IND (S1, S2) (OPT ITEMS 20E, 20G)	N,AN	2
-20G	851-35100-5086		..SWITCH-LIGHTED PUSH BUTTON IND (V96182) (S1, S2) (OPT ITEMS 20E, 20F)	N,AN	2
R -20H	4336731004-4016		..SWITCH-LIGHTED PUSH BUTTON IND (V81590) (S1, S2) (OPT ITEM 20B)	L	2

73-21-86

 ILLUSTRATED PARTS LIST  
 01.1 Page 1039  
 Jul 01/03

FIG. & ITEM	PART NO.	AIRLINE PART NUMBER	NOMENCLATURE 1234567	EFF CODE	QTY PER ASSY
R 03- -20J -20K	BCREF19462 4336731004-4286		DELETED ..SWITCH-LIGHTED PUSHBUTTON IND (V81590) (S1, S2)	R	2
R -20L	BCREF7606		..SWITCH-LIGHTED PUSH BUTTON IND (USE WITH CONFIGURATION "D" MASTER MODULE. SEE REPAIR FOR ADDITIONAL INFORMATION) (V81590) (433-673-1001-1016) (S1, S2) (SPEC S231T290-1016) (OPT ITEM 20M)	AA	2
R -20M	BCREFA0505		..SWITCH-LIGHTED PUSH BUTTON IND (USE WITH CONFIGURATION "D" MASTER MODULE. SEE REPAIR FOR ADDITIONAL INFORMATION) (V81590) (433-673-1004-4016) (S1, S2) (SPEC S231T290-4016) (OPT ITEM 20L)	AA	2
R -20N	BCREFA0505		.SWITCH-LIGHTED PUSH BUTTON IND (USE WITH CONFIGURATION "D" MASTER MODULE. SEE REPAIR FOR ADDITIONAL INFORMATION) (V81590) (433-673-1004-4016) (S1, S2) (SPEC S231T290-4016) (OPT ITEM 20P)	AB	2

# 73-21-86

 ILLUSTRATED PARTS LIST  
 01.101 Page 1040  
 Jul 01/03


**BOEING**  
 COMPONENT  
 MAINTENANCE MANUAL

FIG. & ITEM	PART NO.	AIRLINE PART NUMBER	NOMENCLATURE 1234567	EFF CODE	QTY PER ASSY
R 03- -20P	4336731004-4016		..SWITCH-LIGHTED PUSH BUTTON IND (V81590) (S1, S2) (OPT ITEM 20N)	AB	2
R -20Q	BCREFA0538		..SWITCH-LIGHTED PUSH BUTTON IND (USE WITH CONFIGURATION "D" MASTER MODULE. SEE REPAIR FOR ADDITIONAL INFORMATION) (V81590) (433-673-1004-4086) (S1, S2) (SPEC S231T290-4086)	AD	2
R -20R	BCREFA0538		..SWITCH-LIGHTED PUSH BUTTON IND (USE WITH CONFIGURATION "D" MASTER MODULE. SEE REPAIR FOR ADDITIONAL INFORMATION) (V81590) (433-673-1004-4086) (S1, S2) (SPEC S231T290-4086) (OPT ITEMS 20S, 20T)	AE	2
R -20S	S231T290-5086		..SWITCH-LIGHTED PUSH BUTTON IND (S1, S2) (OPT ITEMS 20R, 20T)	AE	2
R -20T	851-35100-5086		..SWITCH-LIGHTED PUSH BUTTON IND (V96182) (S1, S2) (OPT ITEMS 20R, 20S)	AE	2

# 73-21-86

 ILLUSTRATED PARTS LIST  
 01.101 Page 1041  
 Jul 01/03

FIG. & ITEM	PART NO.	AIRLINE PART NUMBER	NOMENCLATURE 1234567	EFF CODE	QTY PER ASSY
03-					
21	233T3242-22		DELETED		
-21A	233T3242-21		DELETED		
22	BCREFA0538		DELETED		
-22A	S231T290-5086		DELETED		
-22B	851-35100-5086		DELETED		
25	800000121-1		..CONNECTOR- (V05617) (J1)	K,M,N AA,AD AE,AN AQ	1
-25A	800-000121-1		..CONNECTOR- (V05617) (J1)	L,R,A B	1
30	233T3242-2		..BASEPLATE ASSY	K-N,R AA,AB AD,AE AN,AQ	1
			ATTACHING PARTS		
35	NAS514P632-5P		..SCREW  -----*-----	K-N, AA,AB AD,AE AN,AQ	3
-35A	FH6C5PL12BN		DELETED		
R -35B	FH6C5CPL12BN		..SCREW- (V12324)	R	3
40	PFSC35-38ASEMB		...STUD- (V72794) (SPEC BACS21DX1B)	K-N,R AA,AB AD,AE AN,AQ	4
45	SF6G6CBB5D		...NUT- (V12324)	K-N, AA,AB AD,AE AN,AQ	2

73-21-86

 ILLUSTRATED PARTS LIST  
 01.1 Page 1042  
 Jul 01/03


**BOEING**  
 COMPONENT  
 MAINTENANCE MANUAL

FIG. & ITEM	PART NO.	AIRLINE PART NUMBER	NOMENCLATURE 1234567	EFF CODE	QTY PER ASSY
03-50	BACP10U0187N		...BASEPLATE	K-N,R AA,AB AD,AE AN,AQ	1
55	NAS1801-06-5		..SCREW	K,M, N,AA, AD,AE AN,AQ	3
-55A	BACS12CK06U5		..SCREW	L,R,A B	3
60	MS35338-41		..WASHER	K,M, N,AA, AD,AE AN,AQ	3
-60A	BACW10EC06C		..WASHER	L,R,A B	3
65	69B46200-12		..STANDOFF	K-N, R,AA, AB,AD AE,AN AQ	3
70	NAS1801-04-5		..SCREW	K,M, N,AA, AD,AE AN,AQ	6
-70A	BACS12CK04U5		..SCREW	L,R,A B	6
75	K19798-04		..NUT- (V15653) (SPEC BACN10NW1) (OPT RMA4812-160-40 (V72962)) (OPT 293162 (V60119))	K-N, R,AA, AB,AD AE,AN AQ	6

73-21-86

 ILLUSTRATED PARTS LIST  
 01.1 Page 1043  
 Jul 01/03



FIG. & ITEM	PART NO.	AIRLINE PART NUMBER	NOMENCLATURE 1234567	EFF CODE	QTY PER ASSY
03-80	BACC45FN16-24P		..CONNECTOR-(J2)	K-N, R,AA, AB,AD AE,AN AQ	1
85	BACC45FN16-24P7		..CONNECTOR-(J3)	K-N, R,AA, AB,AD AE,AN AQ	1
90	233T6200-142		..BRACKET-CONNECTOR	K-N, R,AA, AB,AD AE,AN AQ	1
-95	233T3242-3		..WIRE BUNDLE ASSY	K-N, R,AA, AB,AD AE,AN AQ	1
-100	M39029-1-16-20		...CONTACT-PIN (V95266)	K-N, R,AA, AB,AD AE,AN AQ	32

- Item Not Illustrated

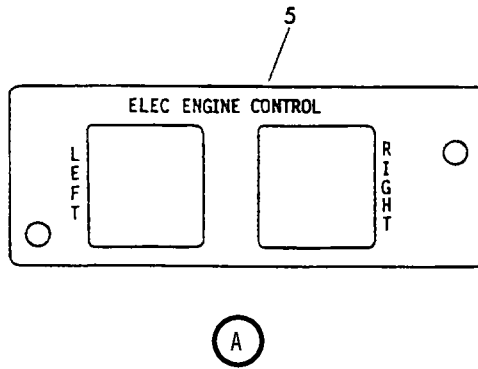
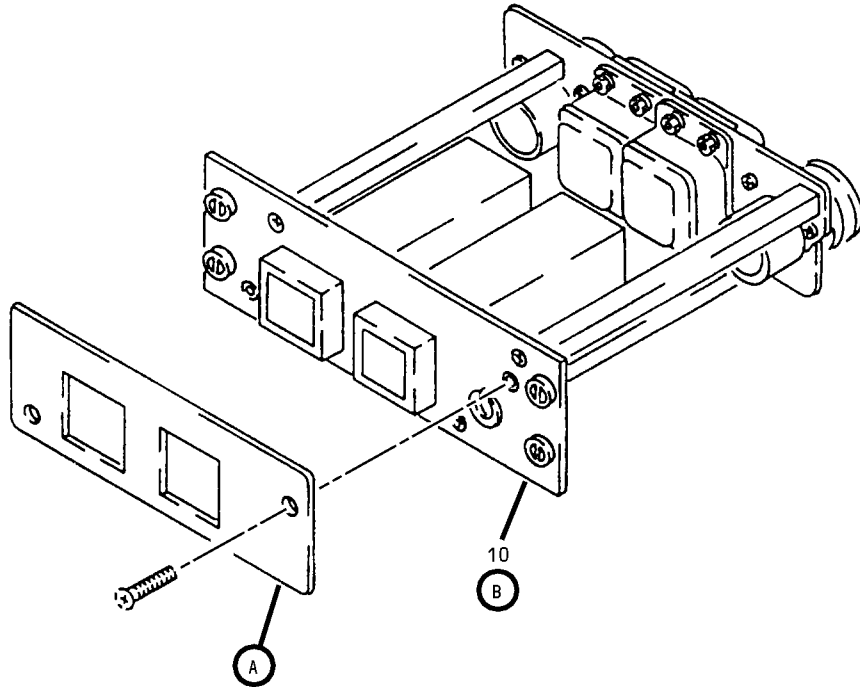
# 73-21-86

ILLUSTRATED PARTS LIST

01.1

Page 1044

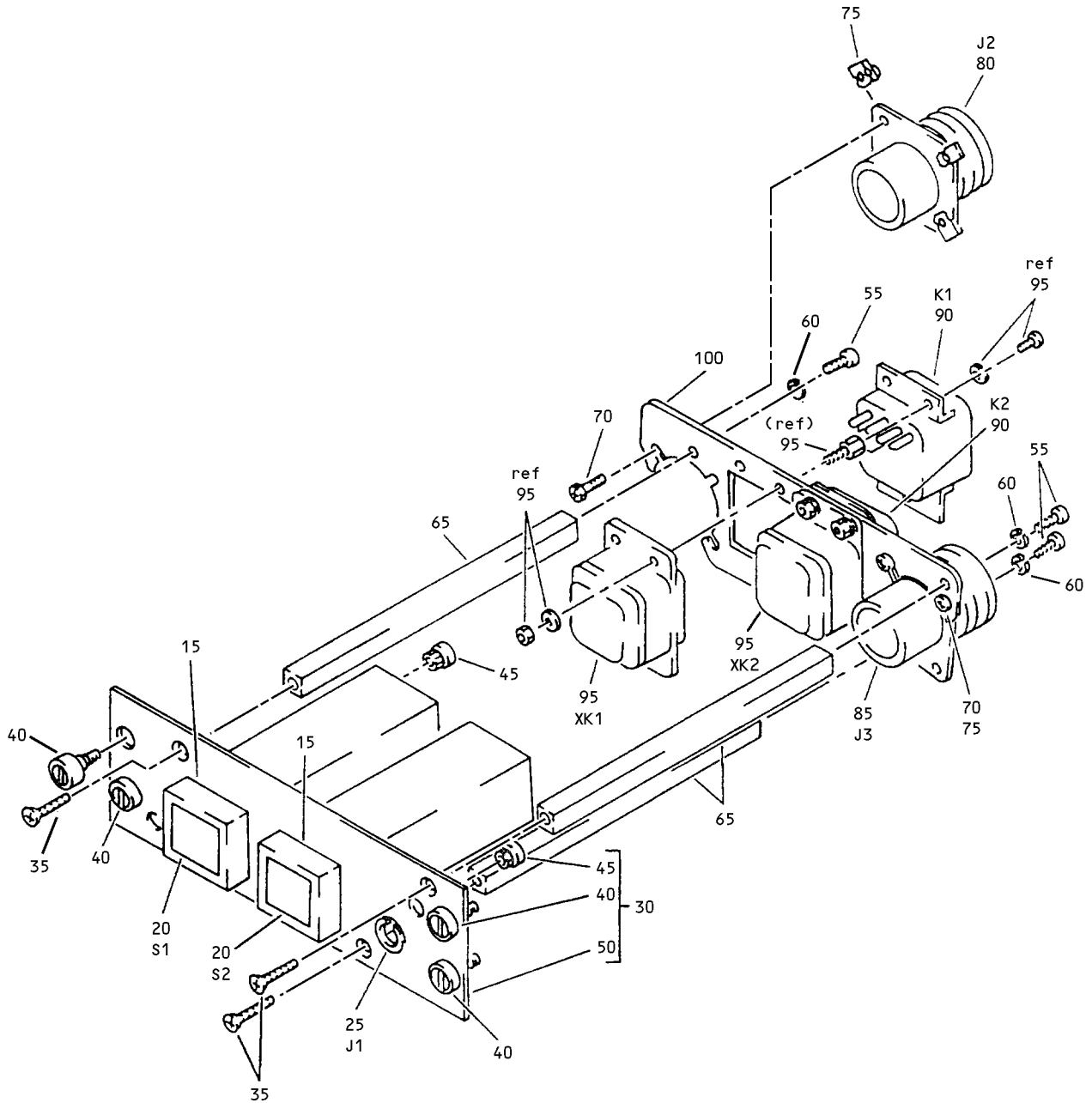
Jul 01/03



EEC Control Panel Assembly, M10761  
Figure 4 (Sheet 1)

**73-21-86**

ILLUSTRATED PARTS LIST  
01.101 Page 1045  
Jul 01/03



(B)

EEC Control Panel Assembly, M10761  
 Figure 4 (Sheet 2)

**73-21-86**

ILLUSTRATED PARTS LIST  
 01.101 Page 1046  
 Jul 01/03

L01164


**BOEING**  
 COMPONENT  
 MAINTENANCE MANUAL

FIG. & ITEM	PART NO.	AIRLINE PART NUMBER	NOMENCLATURE 1234567	EFF CODE	QTY PER ASSY
04-					
-1A	233T3242-302		PANEL ASSY-EEC CONT M10761 (PRE SB 233T3242-73-02)	P	RF
-1B	233T3242-305		PANEL ASSY-EEC CONT M10761 (PRE SB 233T3242-73-02)	Q	RF
-1C	233T3242-1302		PANEL ASSY-EEC CONT M10761 (POST SB 233T3242-73-02)	AC	RF
-1D	233T3242-1305		PANEL ASSY-EEC CONT M10761 (POST SB 233T3242-73-02)	AF	RF
R -1E	233T3242-307		PANEL ASSY-EEC CONT M10761	AG	RF
-1F	233T3242-308		PANEL ASSY-EEC CONT M10761	AH	RF
-1G	233T3100-338		PANEL ASSY-EEC CONT M10761 (PRE SB 233T3242-73-02)	AM	RF
-1H	233T3100-373		PANEL ASSY-EEC CONT M10761 (PRE SB 233T3242-73-02)	AR	RF
-1J	233T3100-374		PANEL ASSY-EEC CONT M10761 (PRE SB 233T3242-73-02)	AS	RF
-1K	233T3100-347		PANEL ASSY-EEC CONT M10761 (PRE SB 233T3242-73-02)	AP	RF
-1L	233T3242-1307		PANEL ASSY-EEC CONT M10761 (POST SB 233T3242-73-02)	AK	RF
-1M	233T3242-1308		PANEL ASSY-EEC CONT M10761 (POST SB 233T3242-73-02)	AL	RF
-1N	233T3242-4		.PANEL ASSYEEC CONT M10761 (LIMITED) (FOR DETAILS SEE FIG.1)	AP	RF
5	S233T100-1097		DELETED		
5A	800-003636		.LIGHTPLATE- (V05617) (SPEC S233T100-1097) (OPT S233T100-1097 (V51896)) (OPT (V05617), (V98140))	P,Q, AC,AF AG,AH AK,AL AR,AS	1

73-21-86

 ILLUSTRATED PARTS LIST  
 01.1 Page 1047  
 Jul 01/03

FIG. & ITEM	PART NO.	AIRLINE PART NUMBER	NOMENCLATURE 1234567	EFF CODE	QTY PER ASSY
04- -5B	800-003636		.LIHTPLATE (LIMITED) (V05617) (SPEC S233T100-1092)	AP,AM	1
-5C	800-002855		.LIGHTPLATE (LIMITED) (V05617) (SPEC S233T100-1092)	AP,AM	1
10	233T3242-15		.PANEL ASSY- (PRE SB 233T3242-73-02)	P,AS	1
-10A	233T3242-13		.PANEL ASSY- (PRE SB 233T3242-73-02)	Q,AR	1
R -10B	233T3242-26		.PANEL ASSY	AG	1
R -10C	233T3242-1015		.PANEL ASSY- (POST SB 233T3242-73-02)	AC,AK	1
R -10D	233T3242-1013		.PANEL ASSY- (POST SB 233T3242-73-02)	AF,AK	1
-10E	233T3242-27		.PANEL ASSY	AH	1
-10F	233T3242-13		.PANEL ASSY (LIMITED) (FOR DETAILS SEE FIG. 2)	AP	1
-10G	233T3242-15		.PANEL ASSY (LIMITED) (FOR DETAILS SEE FIG. 2)	AM	1
-10H	233T3242-6		.PANEL ASSY (LIMITED) (FOR DETAILS SEE FIG. 1)	AM	1
15	433-100-004		..GUARD-SWITCH (V81590) (SPEC S231T290-823)	P,Q, AC,AF AG,AH AK,AL AM,AP AR,AS	2
16	233T3242-24		DELETED		
-16A	233T3242-23		DELETED		

73-21-86

ILLUSTRATED PARTS LIST

01.1

Page 1048

Jul 01/03


**BOEING**  
 COMPONENT  
 MAINTENANCE MANUAL

FIG. & ITEM	PART NO.	AIRLINE PART NUMBER	NOMENCLATURE 1234567	EFF CODE	QTY PER ASSY
04- 17 -17A 20	BCREFA0505 851-35100-5016 BCREFA0505		DELETED DELETED ..SWITCH-LIGHTED PUSH BUTTON IND (V81590) (433-673-1004-4016) (S1, S2) (SPEC S231T290-4016) (OPT ITEM 20A)	P,AM, AS	2
-20A	851-35100-5016		..SWITCH-LIGHTED PUSH BUTTON IND (V96182) (S1, S2) (SPEC S231T290-5016) (OPT ITEM 20)	P,AM, AJ	2
-20B	BCREFA0505		..SWITCH-LIGHTED PUSH BUTTON IND (V81590) (433-673-1004-4016) (S1, S2) (SPEC S231T290-4016) (USE WITH CONFIGURATION "D" MASTER MODULE. SEE REPAIR FOR ADDITIONAL INFORMATION)	Q,AF, AR,AP	2
R -20C	4336731004-4216		..SWITCH-LIGHTED PUSH BUTTON IND (V81590) (S1, S2)	AG,AH AK	2

# 73-21-86

 ILLUSTRATED PARTS LIST  
 01.1 Page 1049  
 Jul 01/03

FIG. & ITEM	PART NO.	AIRLINE PART NUMBER	NOMENCLATURE 1234567	EFF CODE	QTY PER ASSY
R 04- -20D	BCREFA0505		..SWITCH-LIGHTED PUSH BUTTON IND (USE WITH CONFIGURATION "D" MASTER MODULE. SEE REPAIR FOR ADDITIONAL INFORMATION) (V81590) (433-673-1004-4016) (S1, S2) (SPEC S231T290-4016) (OPT ITEM 20E)	AC,AL	2
R -20E	851-35100-5016		..SWITCH-LIGHTED PUSH BUTTON IND (V96182) (S1, S2) (SPEC S231T290-5016) (OPT ITEM 20D)	AC,AL	2
R -20F	BCREFA0505		..SWITCH-LIGHTED PUSH BUTTON IND (USE WITH CONFIGURATION "D" MASTER MODULE. SEE REPAIR FOR ADDITIONAL INFORMATION) (V81590) (433-673-1004-4016) (S1, S2) (SPEC S231T290-4016)	AF,AK	2
25	800000121-1		..CONNECTOR- (V05617) (J1)	P,Q, AC,AF AK,AL AM,AR AS,AP	1

# 73-21-86

ILLUSTRATED PARTS LIST

01.1

Page 1050

Jul 01/03

**BOEING**  
 COMPONENT  
 MAINTENANCE MANUAL

FIG. & ITEM	PART NO.	AIRLINE PART NUMBER	NOMENCLATURE 1234567	EFF CODE	QTY PER ASSY
R 04-25A	800-000121-1		..CONNECTOR-PWR (V05617) (J1)	AG,AH	1
30	233T3242-19		..BASEPLATE ASSY	P,Q, AC,AF AG,AH AK,AL AM,AR AP,AS	1
35	NAS514P632-5P		ATTACHING PARTS ..SCREW	P,Q, AC,AF AK,AL AM,AP AR,AS	3
R -35A	FH6C5CPL12BN		-----*----- ..SCREW- (V12324)	AG,AH	3
40	PFSC35-38ASEMB		...STUD- (V72794) (SPEC BACS21DX1B)	P,Q, AC,AF AG,AH AK,AL AM,AP AR,AS	4
45	SF6G6CBB5D		...NUT- (V12324)	P,Q, AC,AF AG,AH AK,AL AM,AP AR,AS	2

**73-21-86**

ILLUSTRATED PARTS LIST  
 01.1 Page 1051  
 Jul 01/03



FIG. & ITEM	PART NO.	AIRLINE PART NUMBER	NOMENCLATURE 1234567	EFF CODE	QTY PER ASSY
04-50	BACP10U0187N		...BASEPLATE	P,Q, AC,AF AG,AH AK,AL AM,AP AR,AS	1
55	NAS1801-06-5		..SCREW	P,Q, AC,AF AK,AM AP,AR AS	3
R -55A	BACS12HN06-5		..SCREW	AG,AL	3
-55B	BACS12HN06-5		..SCREW (OPT ITEM 55C)	AH	3
-55C	NAS1801-06-5		..SCREW (OPT ITEM 55B)	AH	3
60	MS35338-41		..WASHER	P,Q, AC,AF AK,AL AM,AP AR,AS AM,AP AR,AS	3
R -60A	BACW10EC06CD		..WASHER	AG,AM AR,AS	3
-60B	BACW10EC06CD		..WASHER (OPT ITEM 60C)	AH	3
-60C	BACW10EC06S		..WASHER (OPT ITEM 60B)	AH	3

# 73-21-86

 ILLUSTRATED PARTS LIST  
 01.1 Page 1052  
 Jul 01/03


**BOEING**  
 COMPONENT  
 MAINTENANCE MANUAL

FIG. & ITEM	PART NO.	AIRLINE PART NUMBER	NOMENCLATURE 1234567	EFF CODE	QTY PER ASSY
04-65	69B46200-12		..STANDOFF	P,Q, AC,AF AG,AH AK,AL AM,AP AR,AS	3
70	NAS1801-04-5		..SCREW	P,Q, AC,AF AK,AL AM,AP AR,AS	6
R -70A	BACS12HN04-5		..SCREW	AG,AH	6
-70B	BACS12HN04-5		..SCREW (OPT ITEM 70C)	AH	3
-70C	NAS1801-04-5		..SCREW (OPT ITEM 70B)	AH	3
75	K19798-04		..NUT- (V15653) (SPEC BACN10NW1) (OPT RMA4812-160-40 (V72962)) (OPT 293162 (V60119))	P,Q, AC,AF AG,AH AK,AL AM,AP AR,AS	6
80	BACC45FN16-24P		..CONNECTOR- (J2)	P,Q, AC,AF AG,AH AK,AL AM,AP AR,AS	1

# 73-21-86

ILLUSTRATED PARTS LIST

01.1

Page 1053

Jul 01/03

FIG. & ITEM	PART NO.	AIRLINE PART NUMBER	NOMENCLATURE 1234567	EFF CODE	QTY PER ASSY
04-85	BP06P16-24P7		..CONNECTOR- (V05063) (SPEC BACC45N16-24P7) (OPT BP06P16-24P7 (V07261)) (OPT BP06P16-24P7 (V20441)) (OPT BP06P16-24P7 (V28523)) (OPT BP06P16-24P7 (V54165)) (OPT BP06P16-24P7 (V77820)) (J3)	P,Q, AC,AF AG,AH AK,AL AM,AR AS	1
90	TDH8119-1002		..RELAY- (V35344) (K1, K2)	P,Q, AC,AF AG,AK AL,AM AP,AR AS	2
95	000300-1646		..SOCKET- (V05574) (SPEC BACS16W10A) (OPT 102-010-2 (V09922)) (OPT RSF116418 (V58982)) (XK1, XK2)	P,Q, AC,AF AG,AK AL,AM AP,AR AS	2
100	233T6200-162		..SUPPORT	P,Q,A C,AF, AG	1
-105	233T3242-20		..WIRE BUNDLE ASSY	P,Q, AC,AF AG,AH AK,AL AM,AP AR,AS	1

73-21-86

ILLUSTRATED PARTS LIST

01.1

Page 1054

Jul 01/03


**BOEING**  
 COMPONENT  
 MAINTENANCE MANUAL

FIG. & ITEM	PART NO.	AIRLINE PART NUMBER	NOMENCLATURE 1234567	EFF CODE	QTY PER ASSY
04- -110	M39029-1-16-20		...CONTACT-PIN (V95266)	P,Q,A C,AF, AG	32

- Item Not Illustrated

# 73-21-86

ILLUSTRATED PARTS LIST

01.101 Page 1055

Jul 01/03